

Coastal Atlas

Multi-Purpose Vessel

Dec 13 2024



MAIN SPECIFICATIONS

General

Type of vessel:	Special Service / Multi-Purpose ship
Classification:	BV, 1✘ Hull ● Mach ● AUT-UMS Unrestricted navigation
Callsign:	PJEK
MMSI:	306134000
Flag:	Dutch Antilles
Tonnage (UMS/GT):	255

Dimensions

Length O.A.:	26.80 m
Beam O.A.:	11.50 m
Draught aft (range):	2.24 m – 2.34 m – Nozzle / rudder ext, below keel +0.29 m
Deck Loading:	10 t/m ²

Tank Capacities

Fuel oil:	119 m ³
Fresh water:	40.20 m ³
Black/grey water:	9.10 m ³
Dirty oil:	2 m ³

Performances

Bollard Pull:	33.40 t
---------------	---------

JIFMAR GROUP

→ Contact: sales@jifmar.net



This document is for guidance and information only. Information provided is given under good faith and is non-contractual. This document may be updated without advanced notice. It may not be published, redistributed or reproduced without the prior written consent of ©Jifmar Group.



DETAILED SPECIFICATIONS

Propulsion System

Bow thruster:	360° azimuth thruster 200 kW
Main engine:	3 x Caterpillar 3412D 632 kW

Deck Lay-out

Crane FWD:	HS Marine AKC 290 E2 290 tm Fixed hook SWL 17.16 t – 12.1 m
Crane AFT:	HS Marine AKC 290 LHE3 290 tm Fixed hook SWL 11.30 t - 16,5 m
Anchor handling drum:	Max. hold force 125 100 t - 5 m/min. 40 ton – 12.50 m/m
Tugger/Mooring winch:	13 t - 30 m/min.
Towing hook:	Mampaey aft 25 t Mampaey fore 7 t
Stern roller:	Yes
Bow Roller:	Yes
Capstan:	5 t - 30 m/min
Moonpool:	2 x SB side at fr-12 and fr-46
FIFI system:	Co2

Accommodation

POB:	8
Cabins:	4 double

Navigation & Communication

GMDSS:	2 x Tron TR 20
Satellite communication:	Starlink/Intellian V80

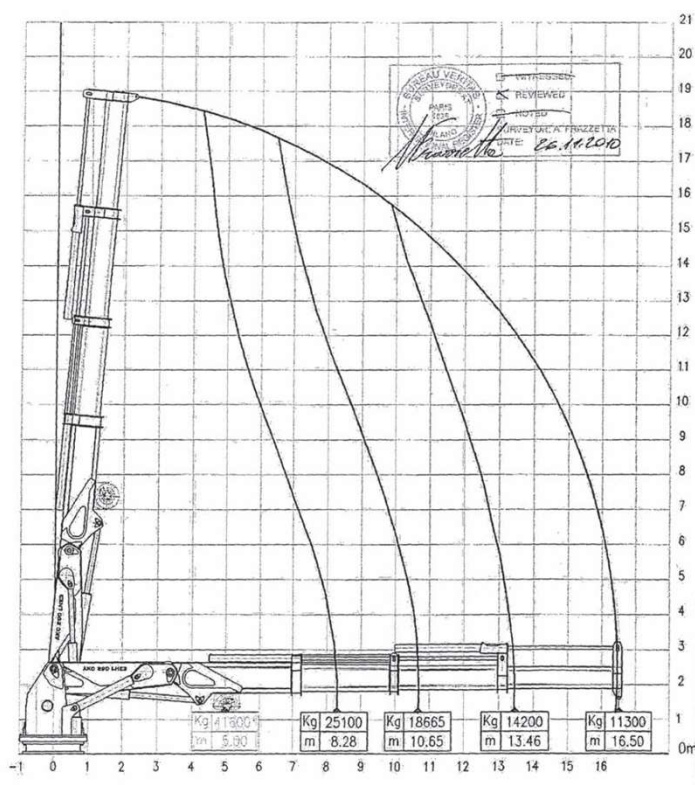
Auxiliary Systems

Generator sets:	2 x Caterpillar C 4.4 107 kVA - 400V/50Hz
-----------------	--

CRANE DIAGRAMS

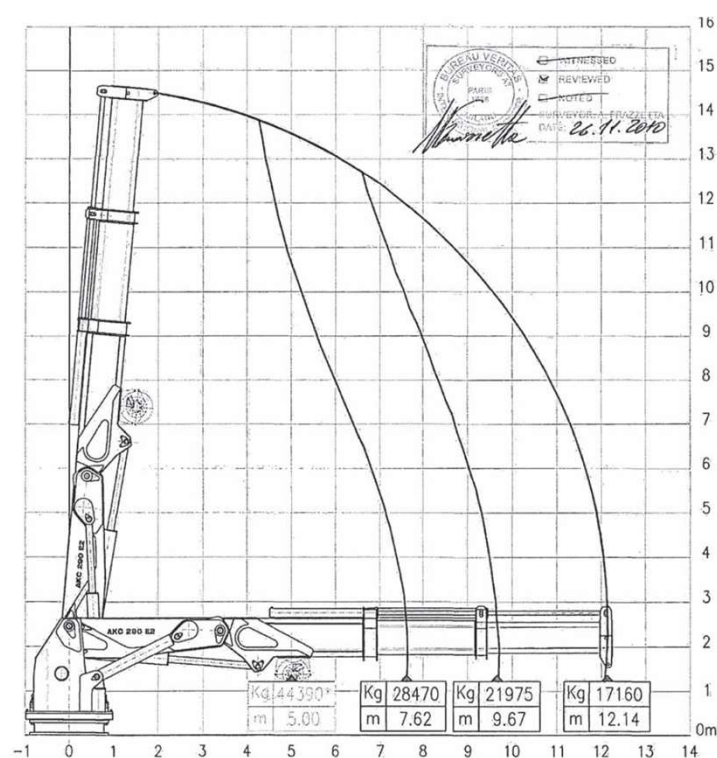
AFT hydraulic crane

HS Marine AKC 290 LHE3 290 tm Fixed hook SWL 11,3 ton - 16,5



FWD hydraulic crane

HS Marine AKC 290 E2 290 tm Fixed hook SWL 17,16 ton - 12,1





GENERAL ARRANGEMENT

