

# Coastal Atlas

Multi-Purpose Vessel

OCT 22 2024



## MAIN SPECIFICATIONS

### General

Type of vessel:	Special Service / Multi-Purpose ship
Classification:	BV, 1✘ Hull ● Mach ● AUT-UMS Unrestricted navigation
Callsign:	PJEK
MMSI:	306134000
Flag:	Dutch Antilles
Tonnage (UMS/GT):	255

### Dimensions

Length O.A.:	26.80 m
Beam O.A.:	11.50 m
Draught aft (range):	2.24 m – 2.34 m – Nozzle / rudder ext, below keel +0.29 m
Deck Loading:	10 t/m <sup>2</sup>

### Tank Capacities

Fuel oil:	119 m <sup>3</sup>
Fresh water:	40.20 m <sup>3</sup>
Black/grey water:	9.10 m <sup>3</sup>
Dirty oil:	2 m <sup>3</sup>

### Performances

Bollard Pull:	33.40 t
---------------	---------

JIFMAR GROUP

→ Contact: sales@jifmar.net



This document is for guidance and information only. Information provided is given under good faith and is non-contractual. This document may be updated without advanced notice. It may not be published, redistributed or reproduced without the prior written consent of ©Jifmar Group.



## DETAILED SPECIFICATIONS

### Propulsion System

Bow thruster:	360° azimuth thruster 200 kW
Main engine:	3 x Caterpillar 3412D 632 kW

### Deck Lay-out

Crane FWD:	HS Marine AKC 290 E2 290 tm Fixed hook SWL 17.16 t – 12.1 m
Crane AFT:	HS Marine AKC 290 LHE3 290 tm Fixed hook SWL 11.30 t - 16,5 m
Anchor handling drum:	Max. hold force 125 100 t - 5 m/min. 40 ton – 12.50 m/m
Tugger/Mooring winch:	13 t - 30 m/min.
Towing hook:	Mampaey aft 25 t Mampaey fore 7 t
Stern roller:	Yes
Bow Roller:	Yes
Capstan:	5 t - 30 m/min
Moonpool:	2 x SB side at fr-12 and fr-46
FIFI system:	Co2

### Accommodation

POB:	5
Cabins:	3 single 1 double

### Navigation & Communication

GMDSS:	2 x Tron TR 20
Satellite communication:	Starlink/Intellian V80

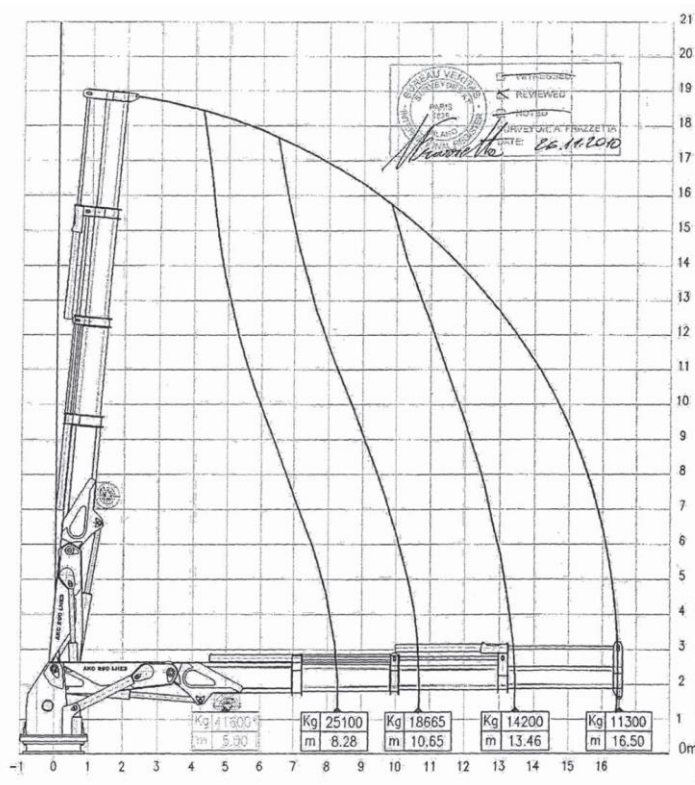
### Auxiliary Systems

Generator sets:	2 x Caterpillar C 4.4 107 kVA - 400V/50Hz
-----------------	--

## CRANE DIAGRAMS

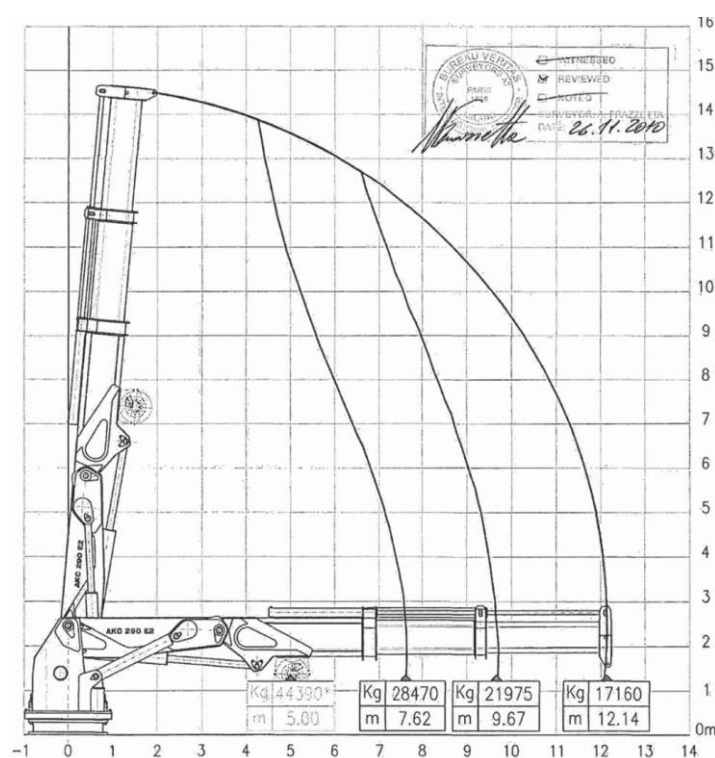
### AFT hydraulic crane

HS Marine AKC 290 LHE3 290 tm Fixed hook SWL 11,3 ton - 16,5



### FWD hydraulic crane

HS Marine AKC 290 E2 290 tm Fixed hook SWL 17,16 ton - 12,1





## GENERAL ARRANGEMENT

