

JIF Pusher

Pushboat

JULY 2 2024



MAIN SPECIFICATIONS

General

Type of vessel:	Pushboat
Callsign:	FAA6344
MMSI:	227142160
Flag:	French
Tonnage (UMS):	5.64

Dimensions

Length O.A. :	7.70 m
Beam O.A. :	3.26 m
Draught aft:	1.60 m

Tank Capacities

Fuel oil:	2 x 200 l
-----------	-----------

Performances

Bollard pull ahead:	1.80 t
---------------------	--------

Propulsion System

Main engine:	Inboard BAUDOUIN
Power output:	300 kW

Deck Lay-out

Towing hook:	4 t
--------------	-----

Accommodation

POB:	6
------	---

Navigation & Communication

GMDSS:	A1
--------	----

Logistics

Berth required (Y/N):	N
Road transportable (Y/N)	Y
Lightship weight:	9 t
Height overall (excluding aerials):	3 m
Beam overall:	3.40 m
Length overall:	7.70 m
Out of water transport history (Y/N):	Y
Lifting points available:	Y

Specific Features

Dismountable and road transportable	
-------------------------------------	--

JIFMAR GROUP

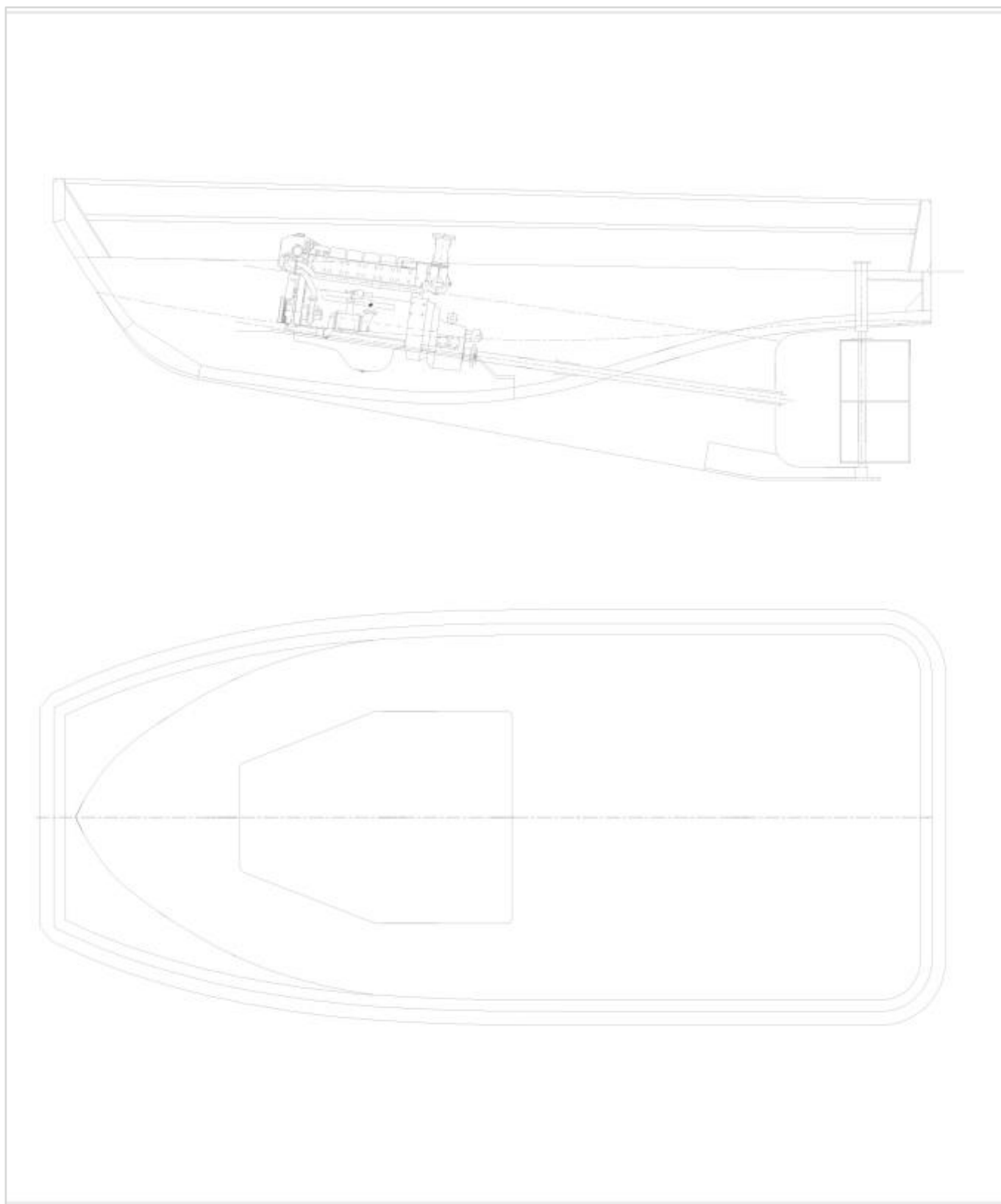
→ Contact: sales@jifmar.net



This document is for guidance and information only. Information provided is given under good faith and is non-contractual. This document may be updated without advanced notice. It may not be published, redistributed or reproduced without the prior written consent of ©Jifmar Group.



GENERAL ARRANGEMENT





/// ADDITIONAL PICTURES

