

JIF Maoré

Multi-Purpose Vessel

AUGUST 12 2024



MAIN SPECIFICATIONS

General

Type of vessel:	Multi-Purpose Vessel
Callsign:	FAE3467
MMSI:	227466620
Flag:	French
Tonnage (UMS):	66.40

Dimensions

Length O.A.:	17.07 m
Beam O.A.:	7.31 m
Draught aft (range):	0.70 m – 1.30 m
Max deadweight tonnage:	59 t
Clear deck Area:	30 m ²
Deck loading:	6 t/m ²

Tank Capacities

Fuel oil:	2 x 240 l + 1 x 50 l + 1 x 7600 l
Ballast water:	18.70 m ³

Performances

Bollard Pull:	3.20 t
---------------	--------

JIFMAR GROUP

→ Contact: sales@jifmar.net



This document is for guidance and information only. Information provided is given under good faith and is non-contractual. This document may be updated without advanced notice. It may not be published, redistributed or reproduced without the prior written consent of ©Jifmar Group.



DETAILED SPECIFICATIONS

Propulsion System

Main engines:	2 x CATERPILLAR C9
Power output:	410 kW

Auxiliary Systems

Generator sets:	CATERPILLAR C2.2 20 kVA
-----------------	----------------------------

Deck Lay-out

Crane FWD:	Heila HLRM 25-4S 1.45 t @ 12.62 m 1.50 t winch
Anchor handling winch:	7.60 t pulling 50 m x 20 mm
Bow roller:	3 m fixed
Boat landing:	Yes
Capstan:	5 t

Accommodation

POB:	10
------	----

Navigation & Communication

GMDSS:	A1
--------	----

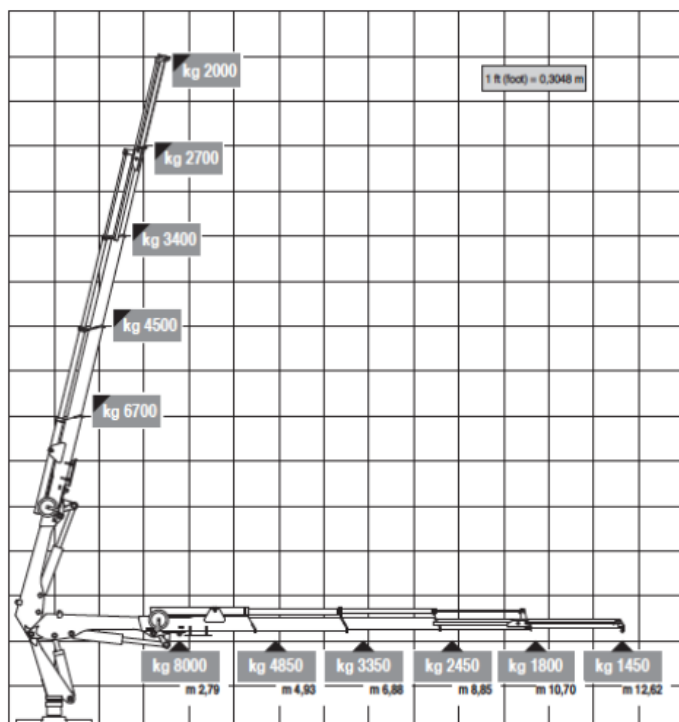
Specific Features

Dismountable
Road transportable

CRANE DIAGRAM

FWD hydraulic crane

Jif Maoré FWD Cranes HLRM 25-4S





GENERAL ARRANGEMENT

