

Coastal Voyager

Shoalbuster 3209

AUGUST 13 2024



MAIN SPECIFICATIONS

General

Type of vessel:	Tug unrestricted navigation
Classification:	1 X Hull ● Mach ● AUT-UMS
IMO:	9660322
Callsign :	PCRB
MMSI:	246885000
Flag:	Dutch
Tonnage (UMS/GT):	327

Dimensions

Length O.A.:	32.27 m
Beam O.A. :	9.35 m
Draught aft (range):	3.00 m – 3.30 m
Max deadweight tonnage:	225 t
Clear deck area:	75 m ²
Deck loading:	15 t/m ²

Tank Capacities

Fuel oil:	174 m ³
Fresh water:	40 m ³
Black/grey water:	4.30 m ³
Dirty oil:	4.30 m ³

Accommodation

POB:	7
Cabins:	3 single 2 double

Performances

Bollard pull:	47 t
---------------	------

JIFMAR GROUP

→ Contact: sales@jifmar.net



This document is for guidance and information only. Information provided is given under good faith and is non-contractual. This document may be updated without advanced notice. It may not be published, redistributed or reproduced without the prior written consent of ©Jifmar Group.



DETAILED SPECIFICATIONS

Propulsion System

Bow thruster:	tunnel type 257 kW
Main engines:	2 x Caterpillar 3512B TA 1230 kW Twin fixed propellers in nozzles
Power output:	2460 kW

Auxiliary Systems

Generator sets:	2 x Caterpillar 4.4 TA 107 kVA - 400V/50Hz
-----------------	---

Navigation & Communication

GMDSS:	A1 + A2 + A3
--------	--------------

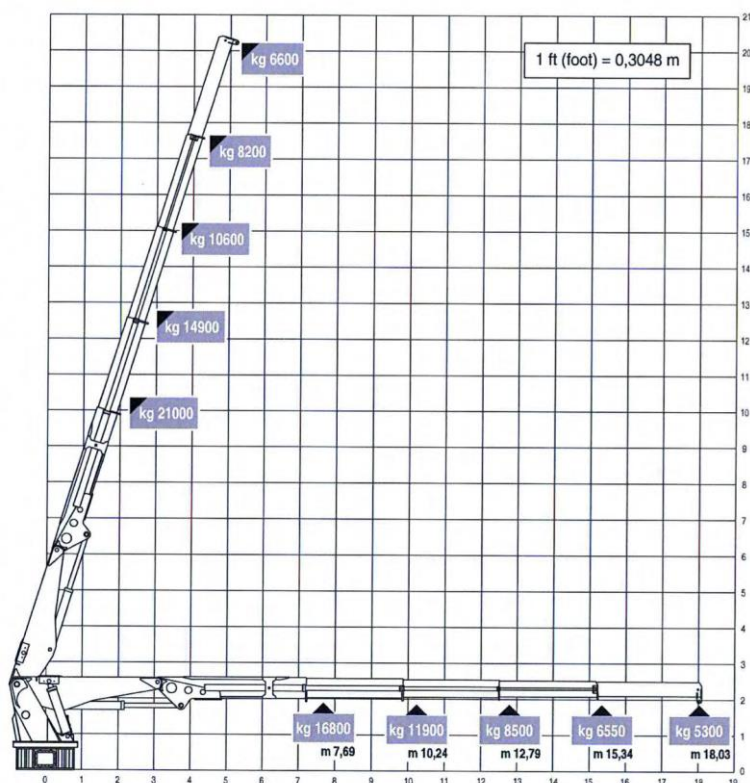
Deck Lay-out

Crane AFT:	Heila HLRM 140-4SL 140 tm Fixed hook 5.30 t @ 18 m Wire winch SWL 5 t
Anchor handling winch:	Max. hold force 125 t 100 t - 5 m/min. 40 t - 12,5 m/min.
Towing winch:	Max. holding force 75 ton 50 t - 10 m/min 20 t - 25 m/min wire cap. 800 m/44 mm
Tugger winch:	12 t - 5 m/min
Stern roller:	Yes
Chain/Wire stopper:	Karm Fork type 100 t
Towing pins:	3-on-row 100 t
Moonpool:	Situated SB-side midships Inside Ø 689 mm

CRANE DIAGRAMS

AFT hydraulic crane

Heila HLRM 140-4SL 140 tm Fixed hook 5.3 ton at 18 m Wire winch SWL 5 ton





GENERAL ARRANGEMENT

