

# Coastal Vanguard

AH Tug

AUGUST 13 2024



## MAIN SPECIFICATIONS

### General

Type of vessel:	Tug unrestricted navigation
Classification:	1 ⚓ Hull ● Mach ● AUT-UMS
IMO:	9591569
Callsign :	PCFH
MMSI:	246743000
Flag:	Dutch
Tonnage (UMS/GT):	327

### Dimensions

Length O.A.:	32.27 m
Beam O.A.:	9.35 m
Draught aft:	3 m
Max deadweight tonnage:	225 t
Clear deck area:	75 m <sup>2</sup>
Deck loading:	15 t/m <sup>2</sup>

### Tank Capacities

Fuel oil:	198 m <sup>3</sup>
Fresh water:	40 m <sup>3</sup>
Black/grey water:	4.30 m <sup>3</sup>
Dirty oil:	4.30 m <sup>3</sup>

### Accommodation

POB:	8
Cabins:	3 single 2 double

### Performances

Bollard pull:	50 t
---------------	------

### Navigation & Communication

GMDSS:	A1 + A2 + A3
--------	--------------

JIFMAR GROUP

→ Contact: sales@jifmar.net



This document is for guidance and information only. Information provided is given under good faith and is non-contractual. This document may be updated without advanced notice. It may not be published, redistributed or reproduced without the prior written consent of ©Jifmar Group.



## DETAILED SPECIFICATIONS

### Propulsion System

Bow thruster:	275 kw
Main engines:	2 x Caterpillar 3512 B TA Twin fixed propellers in nozzles
Power output:	2460 kW

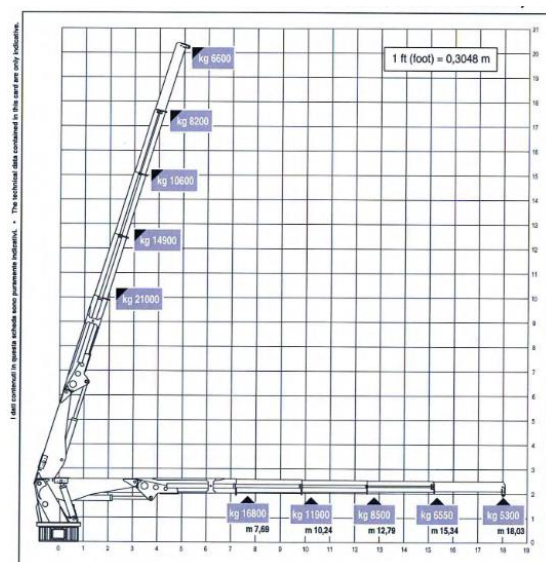
### Auxiliary Systems

Generator sets:	2 x Caterpillar 4.4 107 kVA – 400 V / 50 Hz
-----------------	---

## CRANE DIAGRAM

### FWD hydraulic crane

Heila HLRM 140-4SL 140 tm



### Deck Lay-out

Crane AFT:	Heila HLRM 140-4SL 140 tm Fixed hook 5.30 t @ 18 m Wire winch SWL 5 t
Anchor handling winch:	Max. holding force 125 t 100 t – 5 m / min 40 t – 12.5 m / min
Tugger winch:	12 t – 5 m / min
Stern roller:	Yes
Chain/Wire stopper:	Karm Fork type 100 t
Towing pins:	3-on-row 100 t
Moonpool:	Situated SB-side midships, inside Ø 689 mm



## GENERAL ARRANGEMENT

