

Coastal Crown

Hybrid vessel

AUGUST 13 2024



MAIN SPECIFICATIONS

General

Type of vessel:	AH tug Special Service / Multi-purpose ship
Classification:	1 Hull • Mach, Unrestricted navigation, Green Passport EU AUT-UMS DYNAPOS AM/AT-R, Strengthbottom
IMO:	9920356
Callsign:	PDVW
MMSI:	244820223
Flag:	Dutch
Tonnage (UMS/GT):	427

Tank Capacities

Fuel oil:	110 m ³
Fresh water:	86 m ³
Black/grey water:	53 m ³
Dirty oil:	3.50 m ³

Dimensions

Length O.A.:	36.85 m
Beam O.A.:	12.34 m (11.84 m without tire fenders)
Draught aft:	2.12 m
Max deadweight:	232 t
Clear deck area:	207 m ²
Deck loading:	5 t/m ²

Accommodation

POB:	17 / 19
Cabins:	1 single 9 double

Performances

Bollard pull ahead:	33.40 t
---------------------	---------

JIFMAR GROUP

→ Contact: sales@jifmar.net



This document is for guidance and information only. Information provided is given under good faith and is non-contractual. This document may be updated without advanced notice. It may not be published, redistributed or reproduced without the prior written consent of ©Jifmar Group.



DETAILED SPECIFICATIONS

Propulsion System

Bow thrusters:	2 x Azimuth Veth CJ1000 249 kW
Stern thruster:	1 x Azimuth Veth VZ400 470 kW
Main engines:	2 x Caterpillar C32 895 kW

Deck Lay-out

Crane FWD:	HS Marine AKC 290 LHE3
Crane AFT:	HS Marine AKC 185 HE4
Anchor handling winch:	100 t – 9 m/ min, 50 t – 18 m/ min 25 t – 36 m/ min
Tugger winch:	10 t
Bow Roller:	Yes
Capstan:	Tecnospirit
FIFI system:	Novec 1230

Navigation & Communication

GMDSS:	A1 + A2 + A3
Satellite communication:	VSAT

Auxiliary Systems

Generator sets:	2 x Caterpillar C18 SCAC 599 kW 1 x Caterpillar C4.4 65 ekW
Harbour set:	Caterpillar C4.4 86 ekW synch

Dynamic Positioning

DP system:	Navis
DP class:	DP2

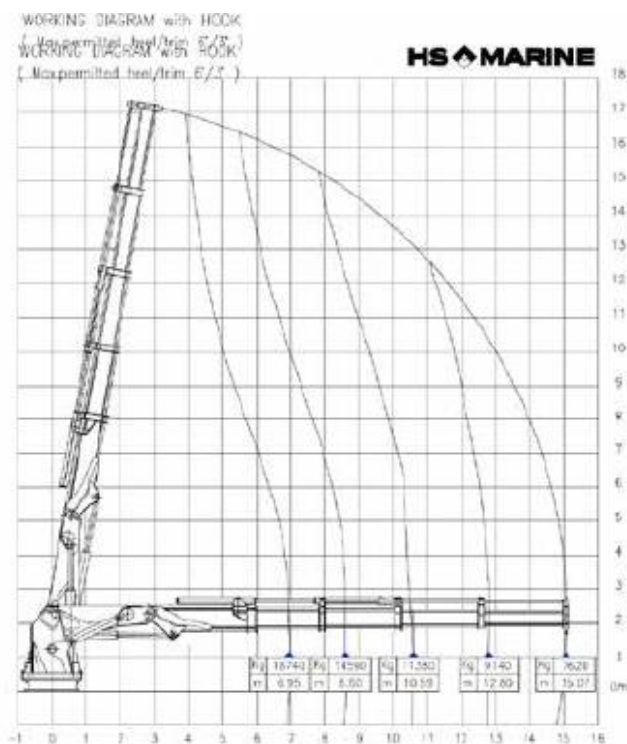
Specific Features

TIER III vessel
Only MPV vessel with a battery pack

CRANE DIAGRAMS

AFT hydraulic crane

HS Marine AKC 185 HE4

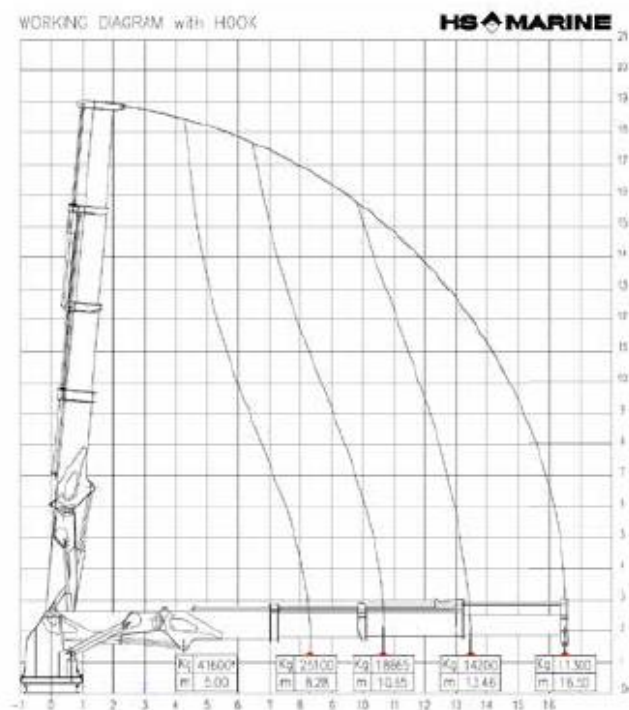


Marine Crane model AKC 185 HE4

(Crane built and designed in according to DIN 15018 Class H1-B3)

FWD hydraulic crane

HS Marine AKC 290 LHE3



Marine Crane model AKC 290 LHE3

(Crane built and designed in according to DIN 15018 Class H1-B3)



GENERAL ARRANGEMENT

