

Coastal Challenger

DP MPV

JULY 2 2024



MAIN SPECIFICATIONS

General

Type of vessel:	Special Service / Multi-Purpose Vessel
Classification:	1✘ Hull ● Mach ✘ AUT-UMS ✘ Dynapos AM/AT Unrestricted navigation
IMO:	9647320
Callsign :	PBOC
MMSI:	244913000
Flag:	Dutch
Tonnage (UMS/GT):	417

Dimensions

Length O.A.:	36.85 m
Beam O.A.:	11.84 m
Draught aft:	2.12 m
Max deadweight tonnage:	247 t
Clear deck area:	180 m ²
Deck loading:	5 t/m ²

Tank Capacities

Fuel oil:	208 m ³
Fresh water:	70 m ³
Black/grey water:	31 m ³
Dirty oil:	3.30 m ³

Performances

Bollard Pull ahead:	36.70 t
Bollard Pull astern:	30.30 t

Accommodation

POB:	11
Cabins:	1 single
	4 double
	1 quadruple

JIFMAR GROUP

→ Contact: sales@jifmar.net



This document is for guidance and information only. Information provided is given under good faith and is non-contractual. This document may be updated without advanced notice. It may not be published, redistributed or reproduced without the prior written consent of ©Jifmar Group.



DETAILED SPECIFICATIONS

Propulsion System

Bow thruster:	Veth CJ Azimuth thruster 253
Stern thruster:	Azimuth thruster 392 kW
Main engines:	2 x Caterpillar C32 970 kW Twin fixed propellers in nozzles
Power output:	2977 kW

Auxiliary Systems

Generator sets:	2 x Caterpillar C9 250 kVA 500 V / 50 Hz
Harbour set:	Caterpillar C4.4 45 kVA 400V / 50 Hz

Dynamic Positioning

DP system:	Navis NAVDP 4000
DP class:	DP1

Deck Lay-out

Crane FWD:	Legendijk LKB-310-T4 Fixed hook SWL 1t at 20m Wire Winch SWL 15t
Anchor handling winch:	AHT winch 80t – 5.30 m/min 40 t – 11m/min 18t – 22.70 m/min
Towing winch:	50 t – 8.70 m/min
Tugger/Mooring winches:	10 t – 10 m/min
Stern roller:	Yes
Bow roller:	Yes
Capstan:	Prohand 18-2/H-Sp
Moon pool:	Yes
FIFI system:	Novec 1230

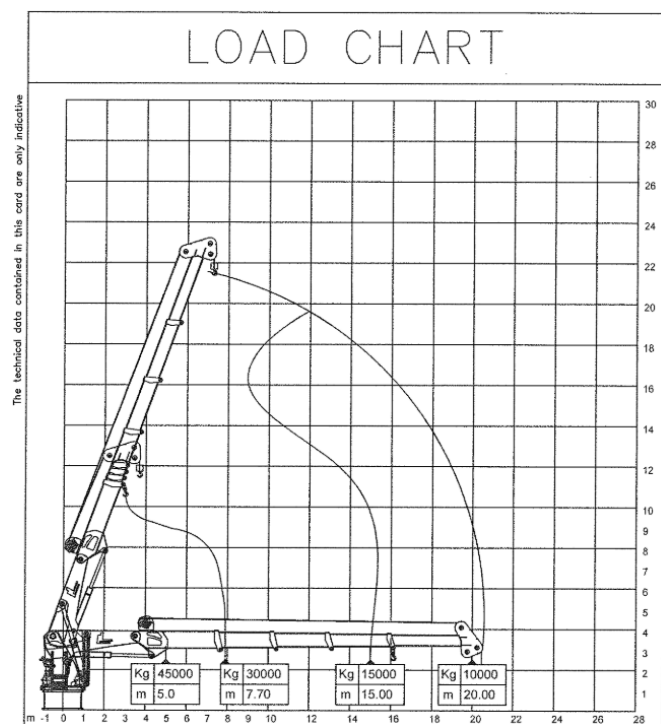
Navigation & Communication

GMDSS:	A1, A2, A3
Satellite communication:	VSAT

CRANE DIAGRAM

FWD hydraulic crane

Legendijk LKB-310-T4 310 tm





GENERAL ARRANGEMENT

