

VDC TP1

Multi-Purpose vVessel

JULY 2 2024



MAIN SPECIFICATIONS

General

Type of vessel:	Multi-Purpose Vessel EuroCarrier 1205
Callsign:	FAG5323
MMSI:	227948820
Flag:	French
Tonnage (UMS):	19.37

Dimensions

Length O.A.:	11.99 m
Beam O.A.:	5.02 m
Draught aft (range):	0.90 m – 1.30 m
Max deadweight tonnage:	7.5 t
Clear deck area:	15 m ²
Deck loading:	2 t/m ²

Tank Capacities

Fuel oil:	3.60 m ³
-----------	---------------------

Performances

Bollard pull:	7.50 t
---------------	--------

JIFMAR GROUP

→ Contact: sales@jifmar.net



This document is for guidance and information only. Information provided is given under good faith and is non-contractual. This document may be updated without advanced notice. It may not be published, redistributed or reproduced without the prior written consent of ©Jifmar Group.



DETAILED SPECIFICATIONS

Propulsion System

Main engines:	2 x DOOSAN L126TIH
Power output:	732 kW

Auxiliary Systems

Generator sets:	45 kVA
-----------------	--------

Deck Lay-out

Crane FWD:	Heila HLM 10-3S 930 kg @ 10.3 m 930 kg winch
Anchor handling winch:	10 t pulling ; 15 t holding
Tugger winches:	2 x 5 t pulling ; 10 t holding
Towing hook:	Mampaey towing hook CMU 15 t
Bow roller:	1.90 m fixed
Mooring winches:	2 x Manual mooring winch 1.5 t CMU 10 t holding
Capstan:	5 t

Accommodation

POB:	6
------	---

Navigation & Communication

GMDSS:	A1
--------	----

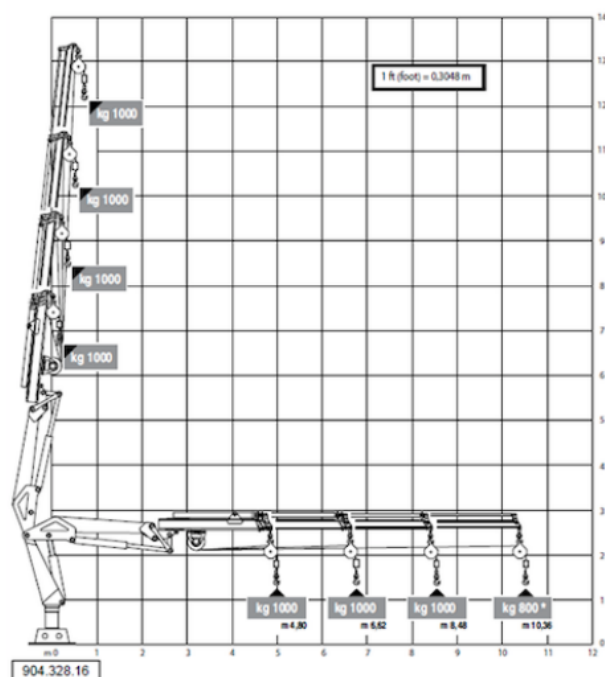
Specific Features

Dismountable and road transportable

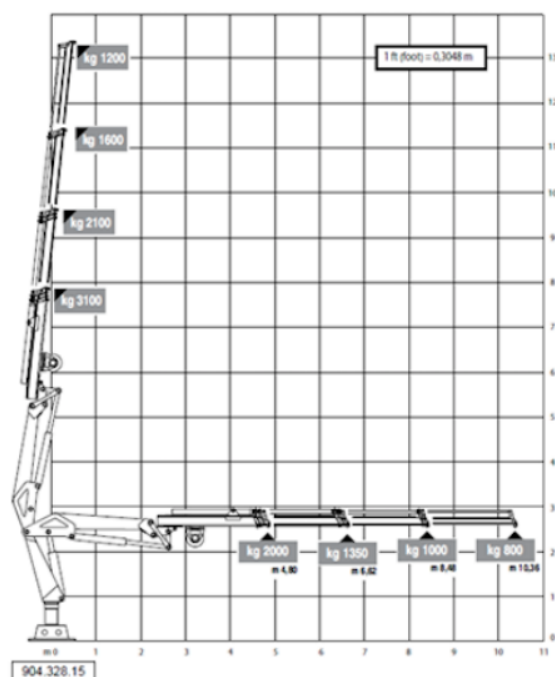
CRANE DIAGRAMS

FWD hydraulic crane

VDC TP Crane: with the use of the crane winch.

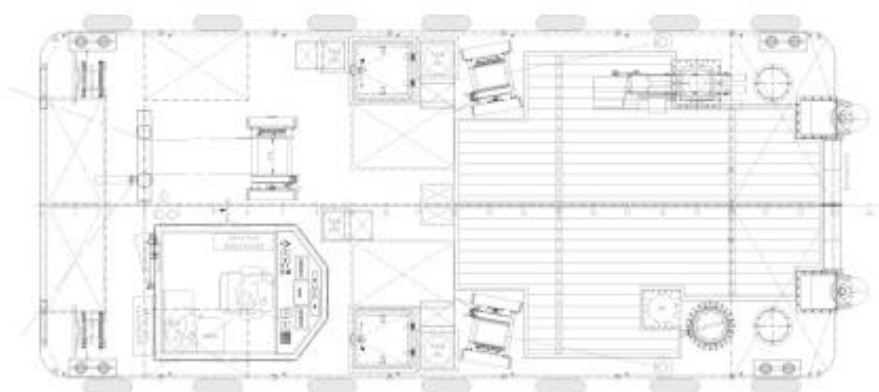
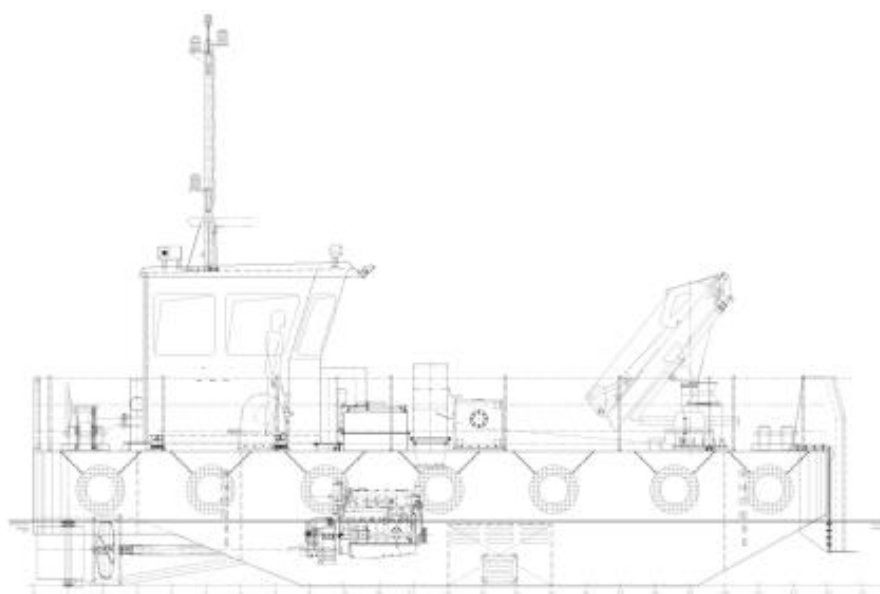


VDC TP Crane: without the use of the crane winch.

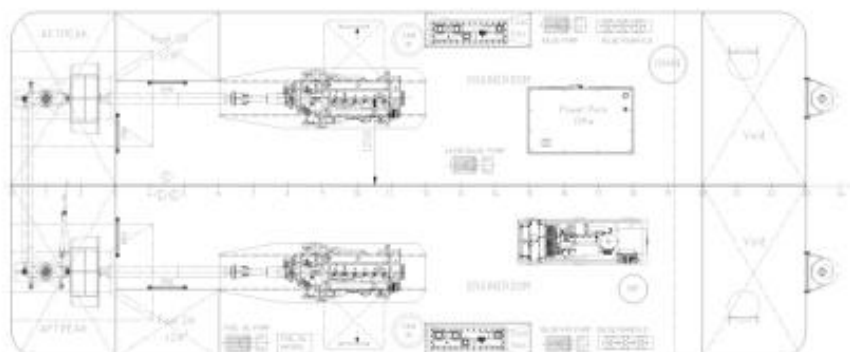




GENERAL ARRANGEMENT



Engine room





ADDITIONAL PICTURES

