

Roxane Z

DP MPV

JULY 9 2024



MAIN SPECIFICATIONS

General

Type of vessel:	Multi-Purpose Vessel EuroCarrier 3413
Classification:	BV 1 X HULL • MACH Anchor handling vessel, Tug, Fire Fighting Ship, 1 - Water Spraying Special Service / Multi purpose ship Unrestricted navigation • AUT-UMS , • DYNAPOS AM/AT R
IMO:	9751456
Callsign:	FIRJ
MMSI:	228056800
Flag:	French
Tonnage (UMS):	499

Performances

Bollard Pull ahead:	38.80 t
---------------------	---------

Dimensions

Length O.A.:	34 m
Beam O.A.:	13 m
Draught aft (range):	2.60 m – 3.25 m
Max deadweight tonnage:	366 t
Clear deck area:	236 m ²
Deck loading:	8.50 t/m ²

Tank Capacities

Fuel oil:	211.50 m ³
Fresh water:	97 m ³
Black/grey water:	15 m ³
Dirty oil:	5 m ³

JIFMAR GROUP

→ Contact: sales@jifmar.net



This document is for guidance and information only. Information provided is given under good faith and is non-contractual. This document may be updated without advanced notice. It may not be published, redistributed or reproduced without the prior written consent of ©Jifmar Group.



DETAILED SPECIFICATIONS

Propulsion System

Fwd azimuth thrusters:	2 x Shallow Draught Thrusters (L-Drive) ZF SDT 4010
Aft azimuth thrusters:	2 x Well Mounted Azimuth Propulsion Thrusters (Z-Drive) ZF AT 6311WM
Main engine:	2 x CATERPILLAR C3512
Power output:	2 x 1140 kW

Auxiliary Systems

Generator sets:	2 x CATERPILLAR C18 ; 2x 492 kVA
Harbour set:	CATERPILLAR C6.6 ; 154 kVA

Accommodation

POB:	19
Cabins:	3 single 8 double

Navigation & Communication

GMDSS:	A1 + A2 + A3
Satellite communication:	VSAT THALOS

Dynamic Positioning

DP system:	SIRENHA
DP class:	DP2
Specific features:	4-point mooring spread available upon request

Deck Lay-out

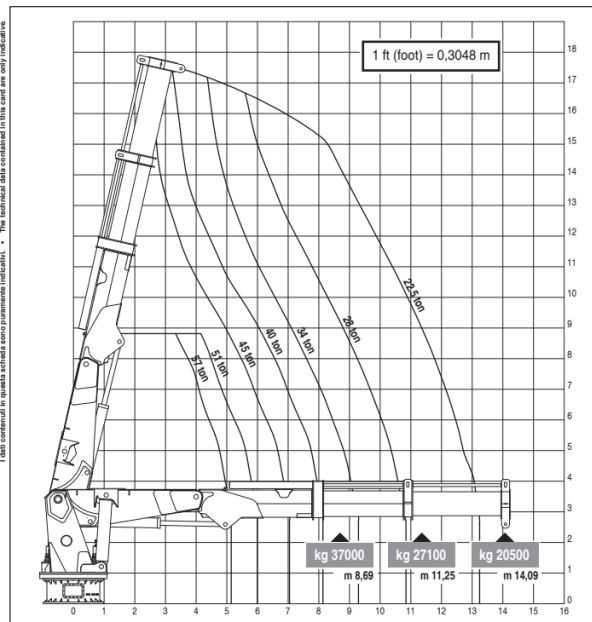
Crane FWD:	HEILA HLRM 340-2S 20.50 t @ 14.09 m 15.3 t winch
Crane AFT:	HEILA HLRM 230-4SLK 9.80 t @ 16.46 m 5 t winch
Anchor handling drum:	125 t pulling ; 190 t holding
Towing winch:	50 t pulling ; 60 t holding
Tugger winches:	2x 15 t pulling ; 22,5 t holding
Spud legs:	Yes
Towing hook:	45 t
Stern roller:	4 m x 1206 mm
Bow roller:	7 m x 2000 mm ; 225 t
Towing pins:	Fwd 115 t Aft 86 t
Boat landing:	Yes
Mooring winch:	Option
Capstans:	2 x 4 t
Moonpool:	Inner diameter 590 mm
FIFI system:	2 x 1300 m ³ /hr with Foam system



CRANE DIAGRAMS

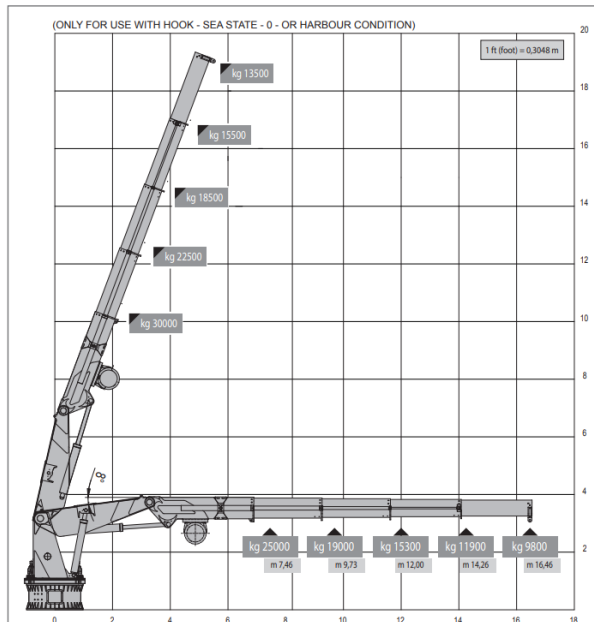
FWD hydraulic crane

Roxane Z Cranes FWD HLRM 340-2S:



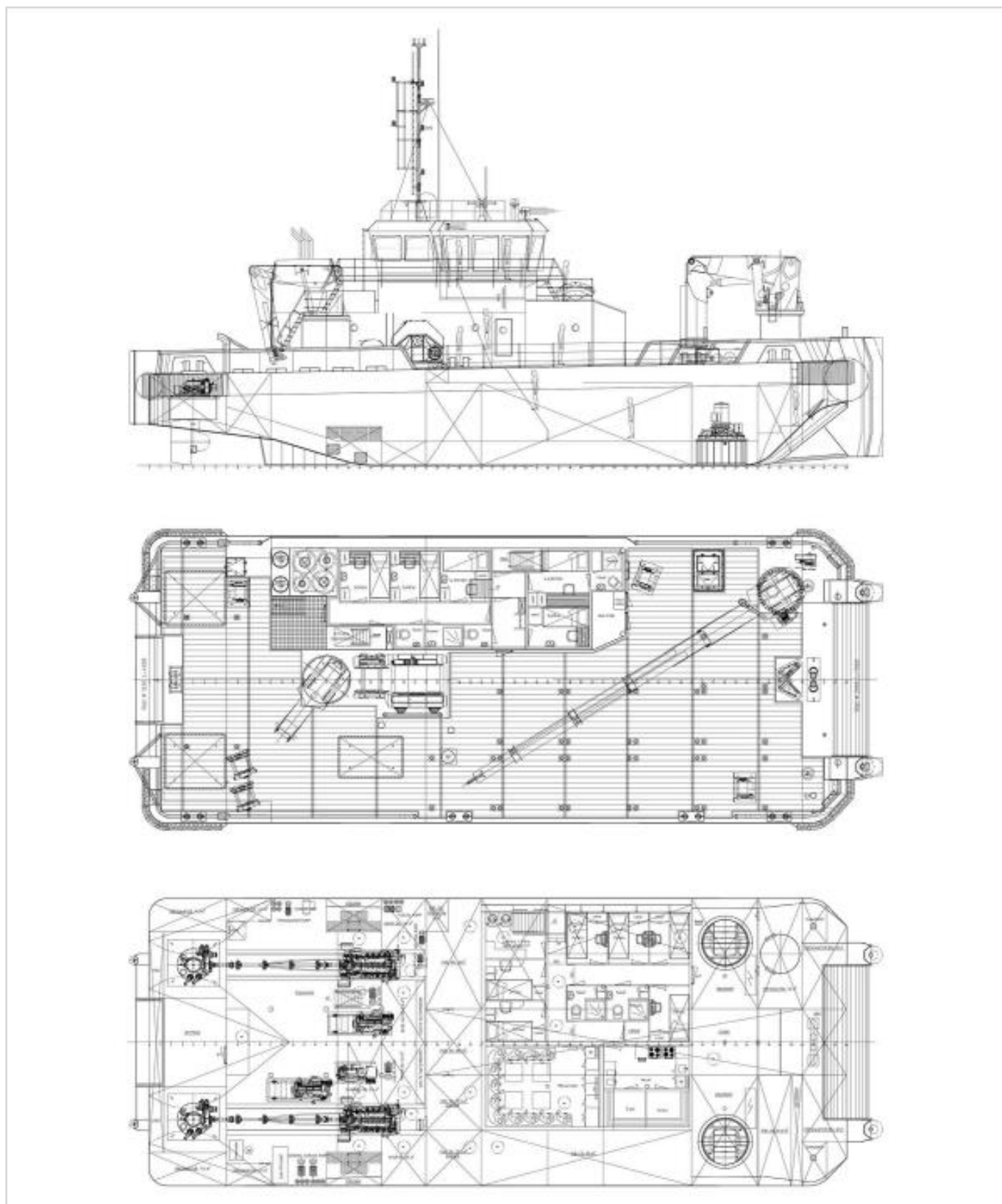
AFT hydraulic crane

Roxane Z Cranes AFT HLRM 230-4SL:





GENERAL ARRANGEMENT





ADDITIONAL PICTURES

