

Mattéo L

Crew Transfer Vessel

JULY 2 2024



MAIN SPECIFICATIONS

General

| | |
|-----------------|----------------------|
| Type of vessel: | Crew transfer vessel |
| Callsign: | 2DSL9 |
| MMSI: | 227060410 |
| Flag: | UK |
| Tonnage (UMS): | 8.56 |

Dimensions

| | |
|--------------|--------|
| Length O.A.: | 9.95 m |
| Beam O.A.: | 4.80 m |
| Draught aft: | 1.20 m |

Tank Capacities

| | |
|--------------|-------|
| Fuel oil: | 800 l |
| Fresh water: | 200 l |

DETAILED SPECIFICATIONS

Propulsion System

| | |
|---------------|---------------------|
| Main engine: | 2 x CUMMINS 6BT5,9M |
| Power output: | 448 kW |

Deck Lay-out

| | |
|---------------|-----|
| Towing hook: | 2 t |
| Stern roller: | Yes |
| Capstan: | 2 t |

Accommodation

| | |
|-----|----|
| POB | 12 |
|-----|----|

Navigation & Communication

| | |
|--------|----|
| GMDSS: | A1 |
|--------|----|

JIFMAR GROUP

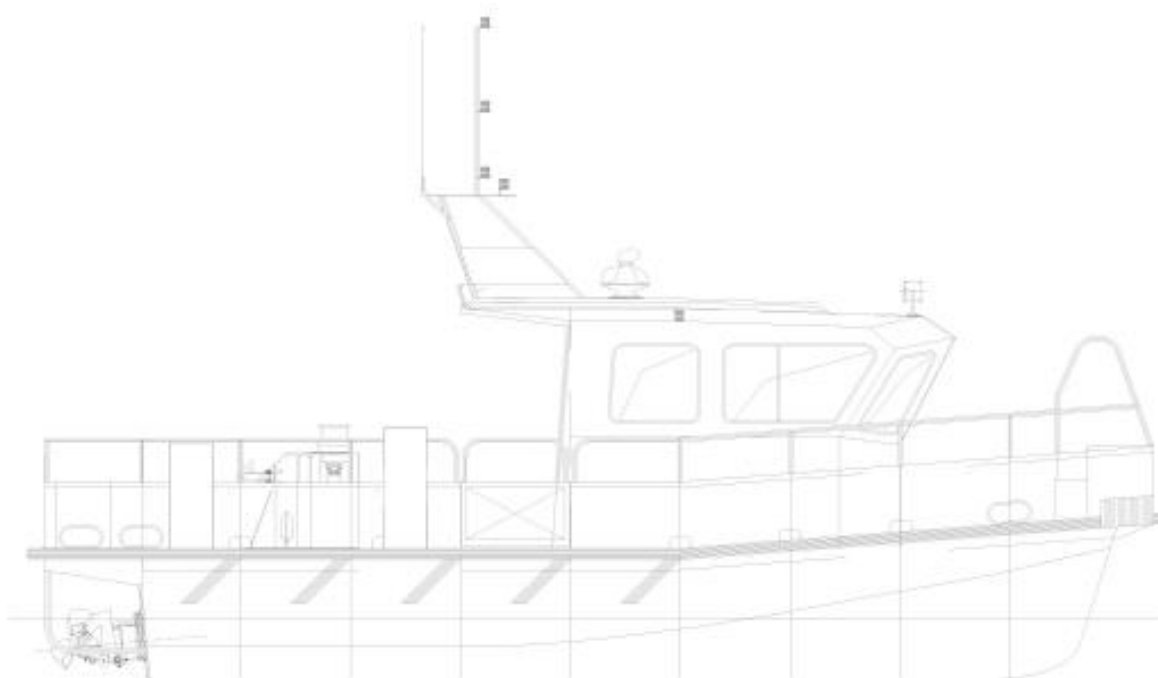
→ Contact: sales@jifmar.net



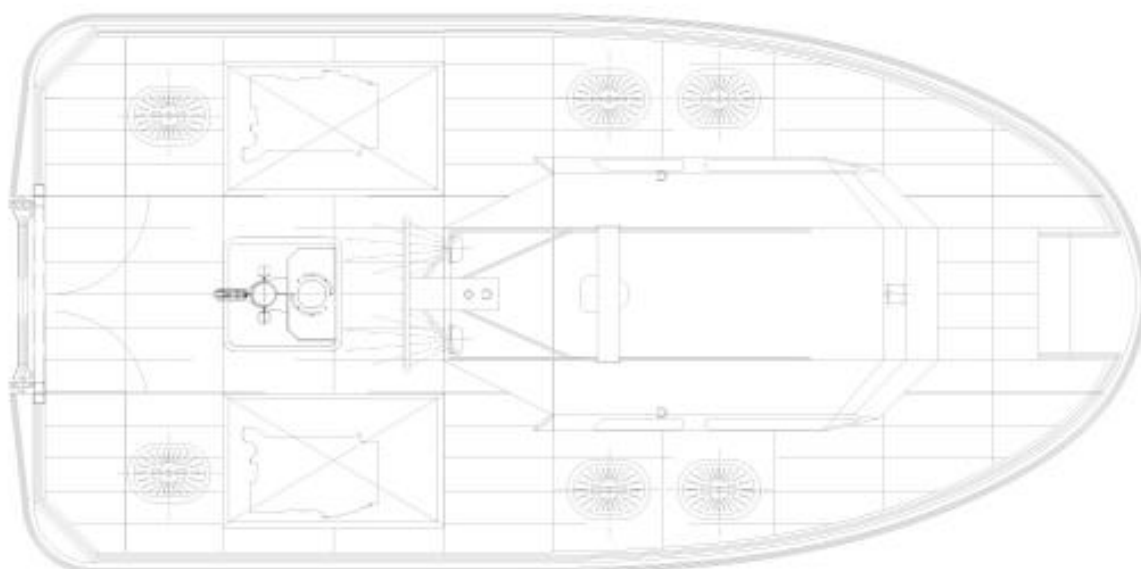
This document is for guidance and information only. Information provided is given under good faith and is non-contractual. This document may be updated without advanced notice. It may not be published, redistributed or reproduced without the prior written consent of ©Jifmar Group.



GENERAL ARRANGEMENT



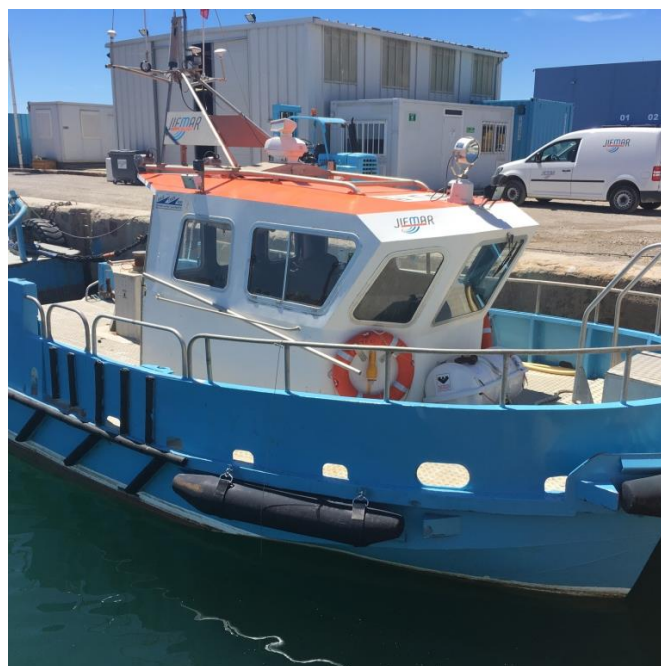
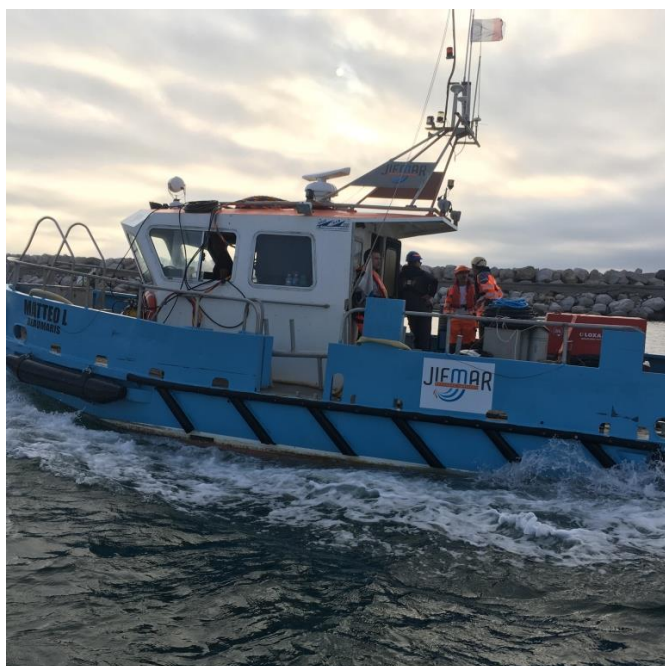
PROFILE FROM STARBOARD



PLAN VIEW



ADDITIONAL PICTURES



JIFMAR GROUP

→ Contact: sales@jifmar.net



This document is for guidance and information only. Information provided is given under good faith and is non-contractual. This document may be updated without advanced notice. It may not be published, redistributed or reproduced without the prior written consent of ©Jifmar Group.