

# Lydia D

DP Multi-Purpose Tug

JULY 2 2024



## MAIN SPECIFICATIONS

### General

Type of vessel:	Multi-Purpose Tug EuroTug 3110
Classification:	BV 1 $\boxtimes$ HULL • MACH Tug Unrestricted navigation • AUT-UMS , ICE CLASS IB
IMO:	9582764
Callsign:	FJZS
MMSI:	228391600
Flag:	French
Tonnage (UMS):	306

### Tank Capacities

Fuel oil:	130 m <sup>3</sup>
Fresh water:	30 m <sup>3</sup>
Black/grey water:	7.1 m <sup>3</sup>
Bilge water:	2.3 m <sup>3</sup>
Ballast water:	30 m <sup>3</sup>
Dirty oil:	1.7 m <sup>3</sup>

### Dimensions

Length O.A.:	31.05 m
Beam O.A.:	10 m
Draught aft (range):	2.85 m – 3.55 m
Max deadweight tonnage:	185 t
Clear deck area:	80 m <sup>2</sup>
Deck loading:	5 t/m <sup>2</sup>

### Performances

Bollard Pull ahead:	48 t
---------------------	------

### Dynamic Positioning

DP System:	SIRENHA
DG Class:	DP1

JIFMAR GROUP

→ Contact: sales@jifmar.net



This document is for guidance and information only. Information provided is given under good faith and is non-contractual. This document may be updated without advanced notice. It may not be published, redistributed or reproduced without the prior written consent of ©Jifmar Group.



## DETAILED SPECIFICATIONS

### Propulsion System

Bow thruster:	360° VAN BALLEGOOY 300 kW
Main engine:	2 x CATERPILLAR 3512B
Power output:	2850 kW

### Auxiliary Systems

Generator sets:	2 x CATERPILLAR C6.6 2 x 154 kVA
-----------------	-------------------------------------

### Accommodation

POB:	16 (<12hrs) ; 7
Cabins:	3 single 2 double

### Navigation & Communication

GMDSS:	A1 + A2 + A3
Satellite communication:	VSAT THALOS

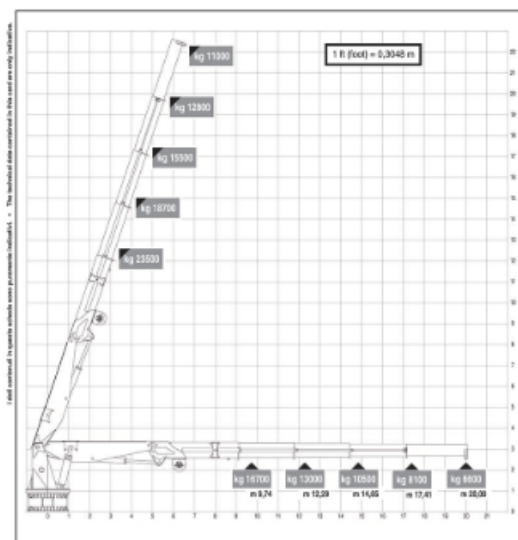
### Deck Lay-out

Crane AFT:	HEILA HLRM 200/20-4SL 6.60 t @ 20 m 8 t winch
Anchor handling winch:	100 t pulling ; 125 t holding
Towing winch:	50 t pulling ; 125 t holding
Tugger winch:	15 t pulling
Towing hook:	50 t
Stern roller:	3.60 m x 1000 mm
Chain/wire stopper:	75 t
Towing pins:	45 t
Boat landing:	Yes

## CRANE DIAGRAM

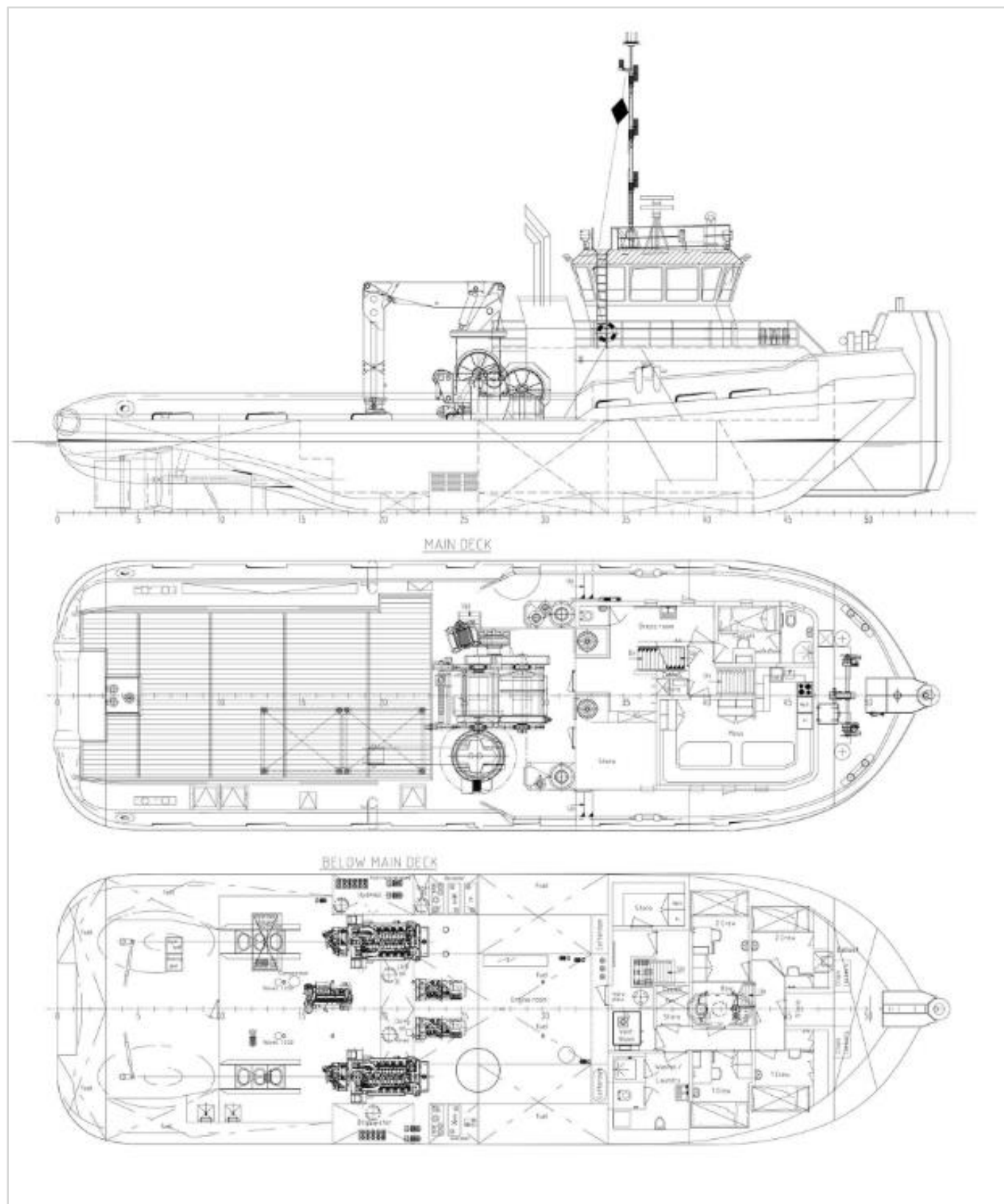
### AFT hydraulic crane

Lydia D AFT Cranes HLRM 200-20-4SL :





## GENERAL ARRANGEMENT





## /// ADDITIONAL PICTURES

