

JIF Patrol 1

Guard Vessel

JULY 2 2024



MAIN SPECIFICATIONS

General

Type of vessel:	Guard vessel
Callsign:	FV5183
MMSI:	228060800
Flag:	French
Tonnage (UMS):	21.35

Dimensions

Length O.A. :	14.83 m
Beam O.A. :	3.96 m
Draught aft (range):	1.20 m
Max deadweight tonnage:	2.60 t

Tank Capacities

Fuel oil:	2.10 m ³
Fresh water:	0.165 m ³

Propulsion System

Main engines:	2 x CATERPILLAR 3408
Power output:	692 kW

Accommodation

POB:	8
------	---

Navigation & Communication

GMDSS:	A1
--------	----

Logistics

Berth required (Y/N):	Y
Road transportable (Y/N)	Y
Lightship weight:	Service Weight 21 t / Lightweight 18 t
Height overall (including aerials):	7.10 m
Height overall (excluding aerials):	5.50 m
Aerials removables (Y/N):	Y
Beam overall:	4.90 m
Length overall:	16.90 m
Out of water transport history (Y/N):	Y
Lifting points available:	N

JIFMAR GROUP

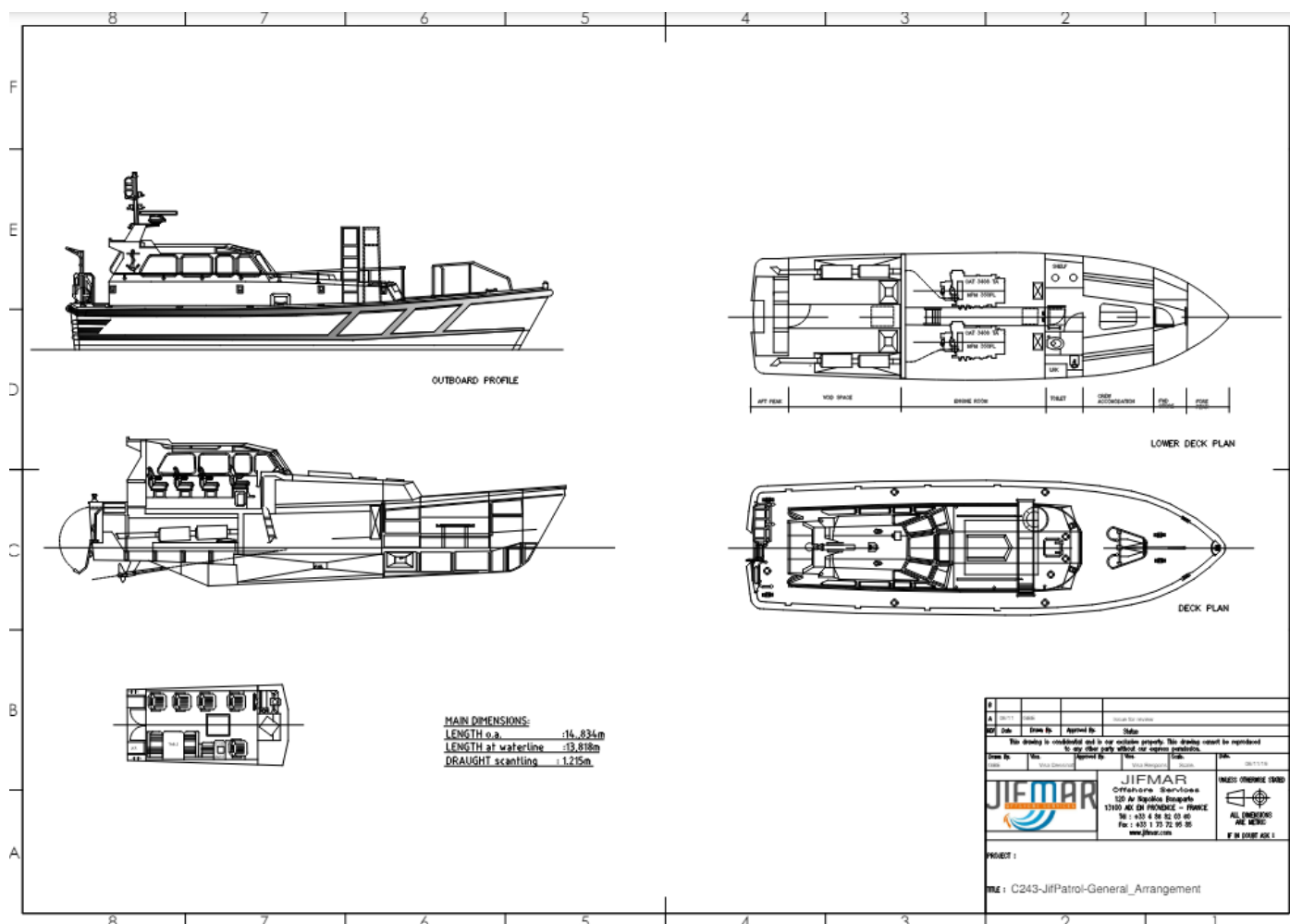
→ Contact: sales@jifmar.net



This document is for guidance and information only. Information provided is given under good faith and is non-contractual. This document may be updated without advanced notice. It may not be published, redistributed or reproduced without the prior written consent of ©Jifmar Group.



GENERAL ARRANGEMENT



Project No. 000000		Sheet No. 000000	
Drawn by	Checked by	Approved by	Date
This drawing is confidential and is our exclusive property. This drawing cannot be reproduced in any other way without our express permission.			
Drawn by	Checked by	Approved by	Date
		JIFMAR Offshore Services 120 Av. République Française 13100 Aix en Provence - FRANCE Tel : +33 4 98 82 03 45 Fax : +33 1 73 72 99 95 www.jifmar.com	
PROJECT :			
TITLE : C243-JifPatrol-General_Arrangement			