

# JIF Maoré

Multi-Purpose Vessel

JULY 2 2024



## MAIN SPECIFICATIONS

### General

Type of vessel:	Multi-Purpose Vessel
Callsign:	FAE3467
MMSI:	227466620
Flag:	French
Tonnage (UMS):	66.40

### Dimensions

Length O.A.:	17.07 m
Beam O.A.:	7.31 m
Draught aft (range):	0.70 m – 1.30 m
Max deadweight tonnage:	59 t
Clear deck Area:	30 m <sup>2</sup>
Deck loading:	6 t/m <sup>2</sup>

### Tank Capacities

Fuel oil:	2 x 240 l + 1 x 50 l + 1 x 7600 l
Ballast water:	18.70 m <sup>3</sup>

### Performances

Bollard Pull:	3.20 t
---------------	--------

JIFMAR GROUP

→ Contact: [sales@jifmar.net](mailto:sales@jifmar.net)



This document is for guidance and information only. Information provided is given under good faith and is non-contractual. This document may be updated without advanced notice. It may not be published, redistributed or reproduced without the prior written consent of ©Jifmar Group.



## DETAILED SPECIFICATIONS

### Propulsion System

Main engines :	2x CATERPILLAR C9
Power output:	410 kW

### Auxiliary Systems

Generator sets:	CATERPILLAR C2.2 20 kVA
-----------------	----------------------------

### Deck Lay-out

Crane FWD:	Heila HLRM 25-4S 1.45 t @ 12.62 m 1.50 t winch
Anchor handling winch:	7.60 t pulling 50 m x 20 mm
Bow roller:	3 m fixed
Boat landing:	Yes
Capstan:	5 t

### Accommodation

POB:	10
------	----

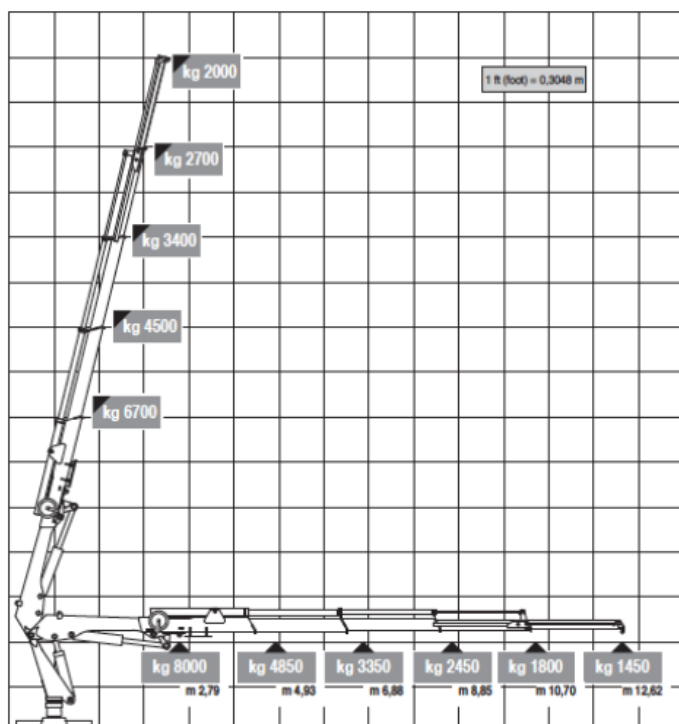
### Navigation & Communication

GMDSS:	A1
--------	----

## CRANE DIAGRAM

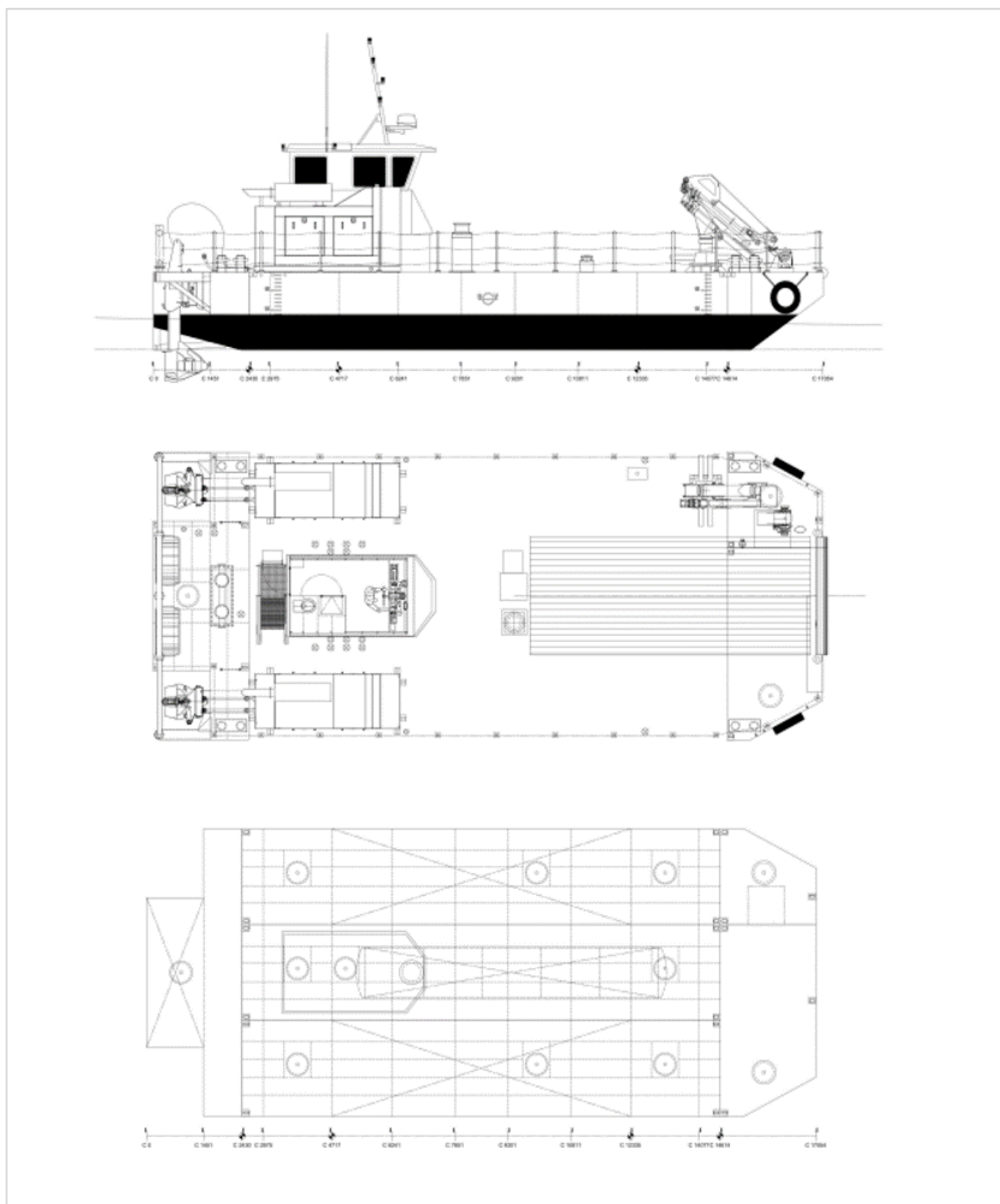
### FWD hydraulic crane

Jif Maoré FWD Cranes HLRM 25-4S





## GENERAL ARRANGEMENT







## /// ADDITIONAL PICTURES

