

JIF Helios

DP MPV

JULY 2 2024



MAIN SPECIFICATIONS

General

Type of vessel:	Multi-Purpose Vessel EuroCarrier 2611
Classification:	BV 1 HULL • MACH Special service Unrestricted navigation • AUT-UMS , • DYNAPOS AM/AT
IMO:	9839961
Callsign:	FLXC
MMSI:	228376800
Flag:	French
Tonnage (UMS):	255

Tank Capacities

Fuel oil:	112 m ³
Fresh water:	60 m ³
Black/grey water:	7.20 m ³
Dirty oil:	1.70 m ³

Dimensions

Length O.A.:	26.48 m
Beam O.A.:	11 m
Draught aft (range):	2.85 m – 3.35 m
Max deadweight tonnage:	190 t
Clear deck area:	150 m ²
Deck loading:	6 t/m ²

Performances

Bollard Pull ahead:	32.50 t
---------------------	---------

Dynamic Positioning

DP System:	SIRENHA
DP class:	DP1

JIFMAR GROUP

→ Contact: sales@jifmar.net



This document is for guidance and information only. Information provided is given under good faith and is non-contractual. This document may be updated without advanced notice. It may not be published, redistributed or reproduced without the prior written consent of ©Jifmar Group.



DETAILED SPECIFICATIONS

Propulsion System

Bow thruster:	250 kW
Stern thruster:	200 kW
Main engine:	2 x CATERPILLAR C32 ACERT
Power output:	2 x 970 kW

Auxiliary Systems

Generator sets:	2 x JOHN DEERE 328 KVA
Harbour set:	1 x JOHN DEERE 102 KVA

Accommodation

POB:	20
Cabins:	2 single 4 double

Navigation & Communication

GMDSS:	A1 + A2 + A3
Satellite communication:	VSAT THALOS

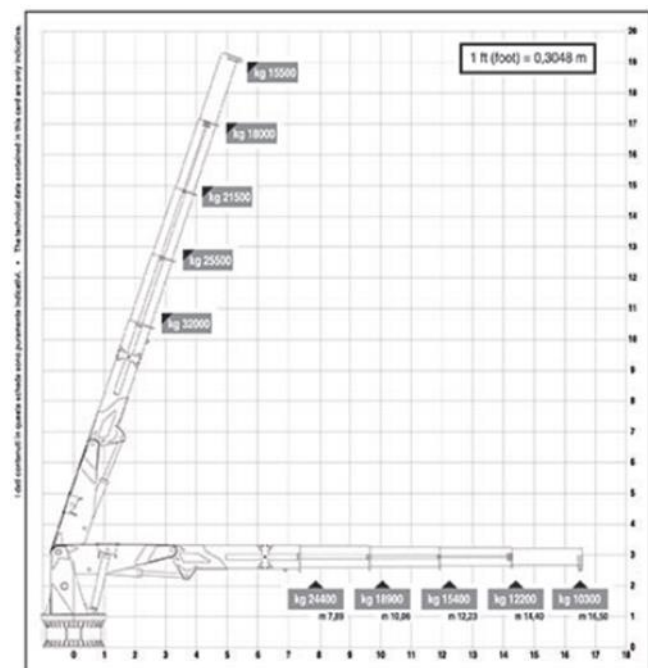
Deck Lay-out

Crane FWD:	HEILA HLRM 230-4SL 9.80 t @ 16.50 m 5 t winch
Crane AFT:	HEILA HLMR 140-3S 10 t @ 12.17 m
Anchor handling drum:	100 t pulling ; 150 t holding
Towing winch:	15 t pulling
Tugger/mooring winch:	15 t pulling
Towing hook:	15 t
Stern roller:	5 m x 711 mm
Bow roller:	6 m x 1207 mm
Chain/Wire stopper:	75 t
Boat landing:	Yes

CRANE DIAGRAMS

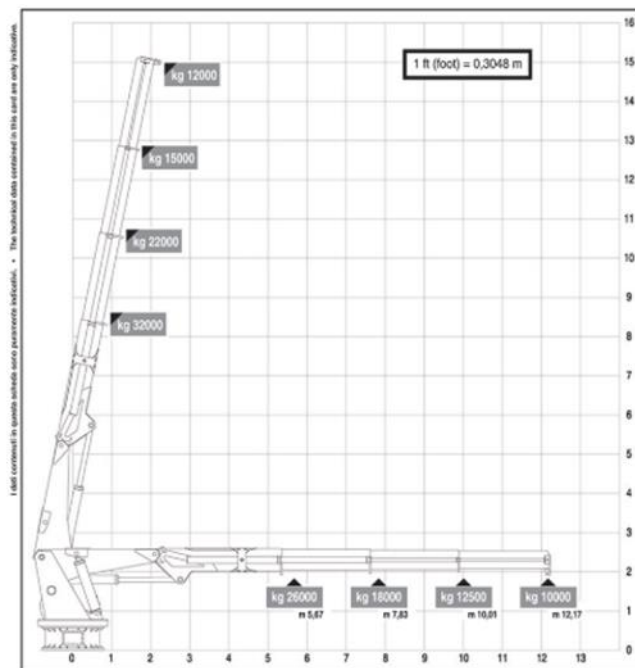
FWD hydraulic crane

JIF Helios FWD Cranes HLRM 230 4SL:



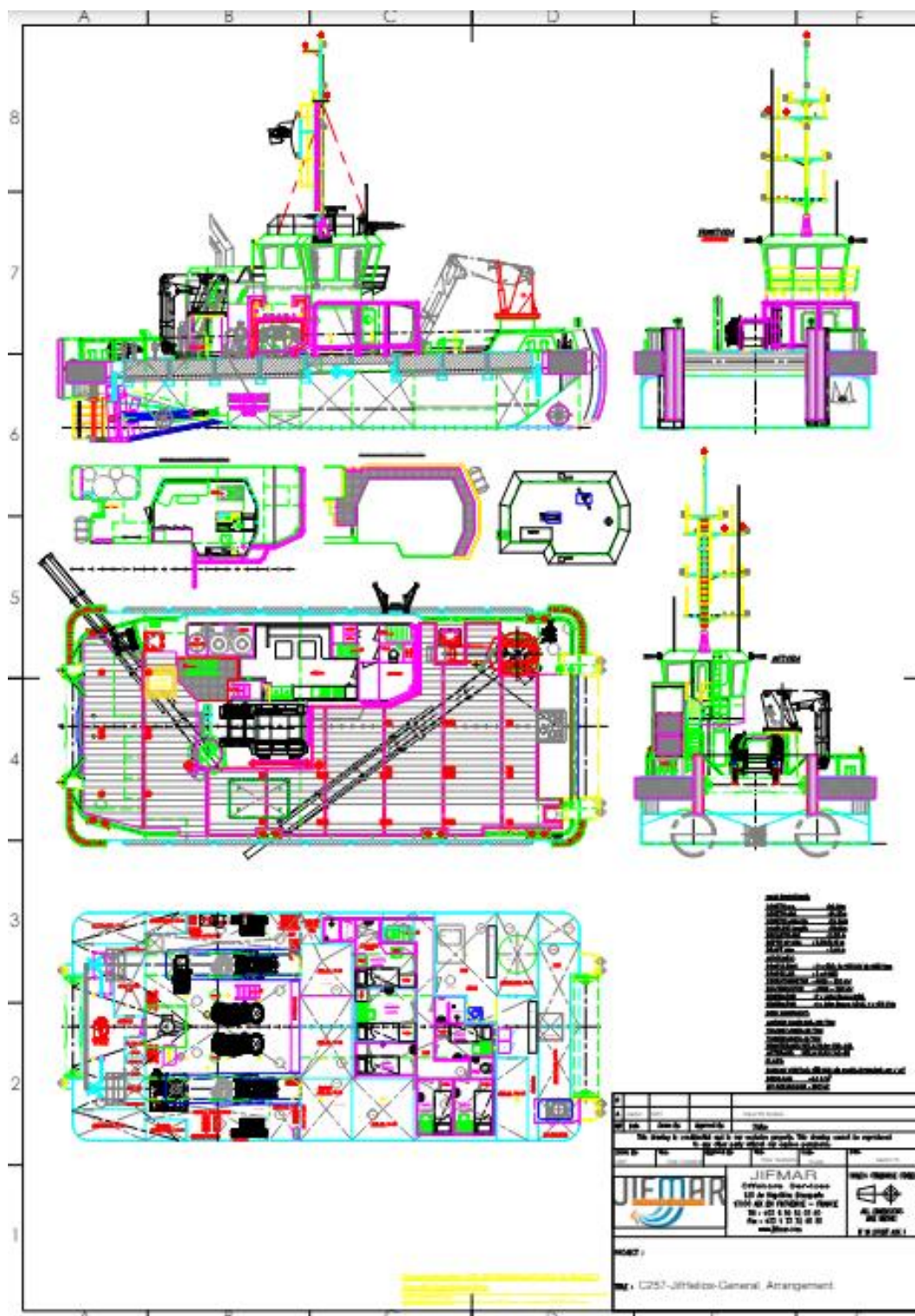
AFT hydraulic crane

JIF Helios AFT Cranes HLRM 140 3S:





GENERAL ARRANGEMENT





ADDITIONAL PICTURES

