

JIF Breizh

DP MPV

JULY 2 2024



MAIN SPECIFICATIONS

General

Type of vessel:	Multi-Purpose Vessel EuroCarrier 3711
Classification:	BV 1 X HULL • MACH Special service Unrestricted navigation • AUT-UMS , • DYNAPOS AM/AT
IMO:	9648180
Callsign:	FIJG
MMSI:	228041900
Flag:	French
Tonnage (UMS):	310

Tank Capacities

Fuel oil:	178 m ³
Fresh water:	56 m ³
Black/grey water :	31 m ³
Dirty oil:	1.50 m ³

Dimensions

Length O.A.:	36.95 m
Beam O.A.:	10.54 m
Draught aft (range):	1.80 m – 2.40 m
Max deadweight tonnage:	250 t
Clear deck area:	225 m ²
Deck loading:	6 t/m ²

Performances

Bollard Pull ahead :	20.20 t
----------------------	---------

Dynamic Positioning

DP System:	SIRENHA
DP Class:	DP1

JIFMAR GROUP

→ Contact: sales@jifmar.net



This document is for guidance and information only. Information provided is given under good faith and is non-contractual. This document may be updated without advanced notice. It may not be published, redistributed or reproduced without the prior written consent of ©Jifmar Group.



DETAILED SPECIFICATIONS

Propulsion System

Bow thruster:	200 kW
Stern thruster:	200 kW
Main engines:	2 x MITSUBISHI S12A2 C2MPTK(FW)
Power output:	2 x 634 kW

Auxiliary Systems

Generator sets:	1 x CATERPILLAR C18 ; 492 kVA 2 x CATERPILLAR C6.6 ; 154 kVA
-----------------	---

Accommodation

POB:	18
Cabins:	4 single 6 double

Navigation & Communication

GMDSS:	A1 + A2 + A3
Satellite communication:	VSAT THALOS

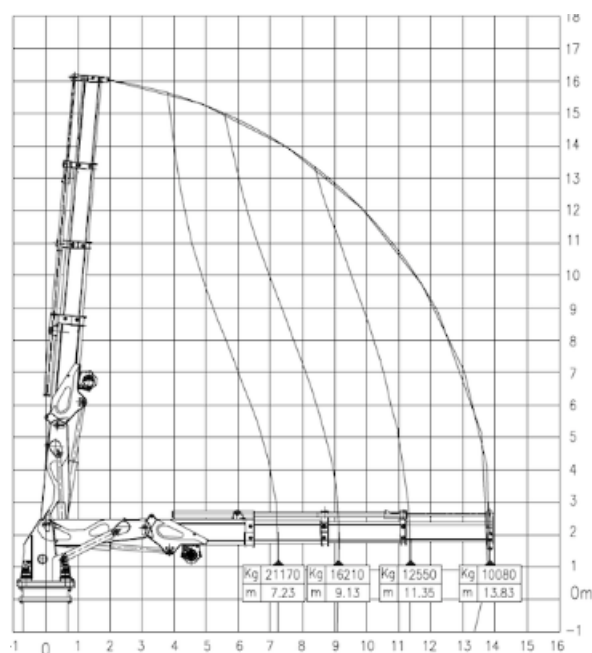
Deck Lay-out

Crane FWD:	HS AKC 210 HE3 10 t @ 13.83 m 5 t winch
Crane AFT:	HEILA HLRM 65-4S 4.80 t @ 12.65 m
Anchor handling winch:	70 t pulling ; 90 t holding
Towing winch:	70 t pulling ; 90 t holding
Tugger winch:	10 t pulling
Towing hook:	20 t
Stern roller:	5 m x 537 mm
Bow roller:	5.50 m x 820 mm
Capstans:	2 x 5 t
Chain/Wire stopper:	86 t
Towing pins:	86 t
Boat landing:	Yes

CRANE DIAGRAMS

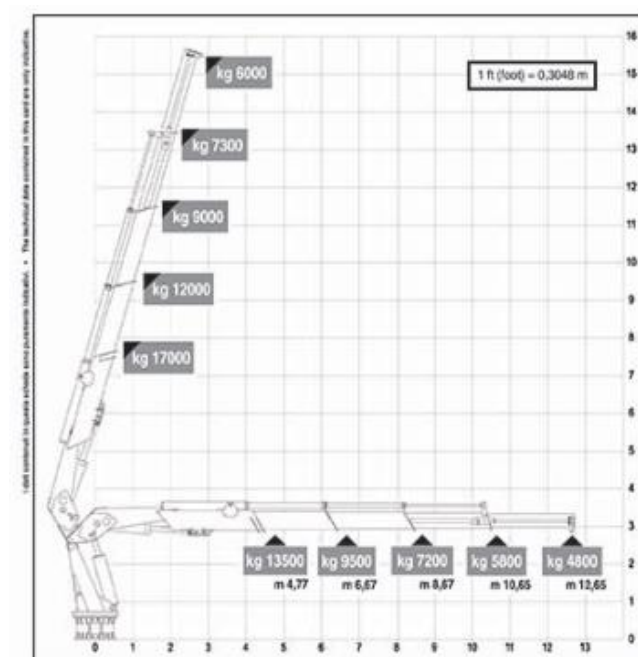
FWD hydraulic crane

JIF Breizh FWD Cranes HS AKC 210HE3:



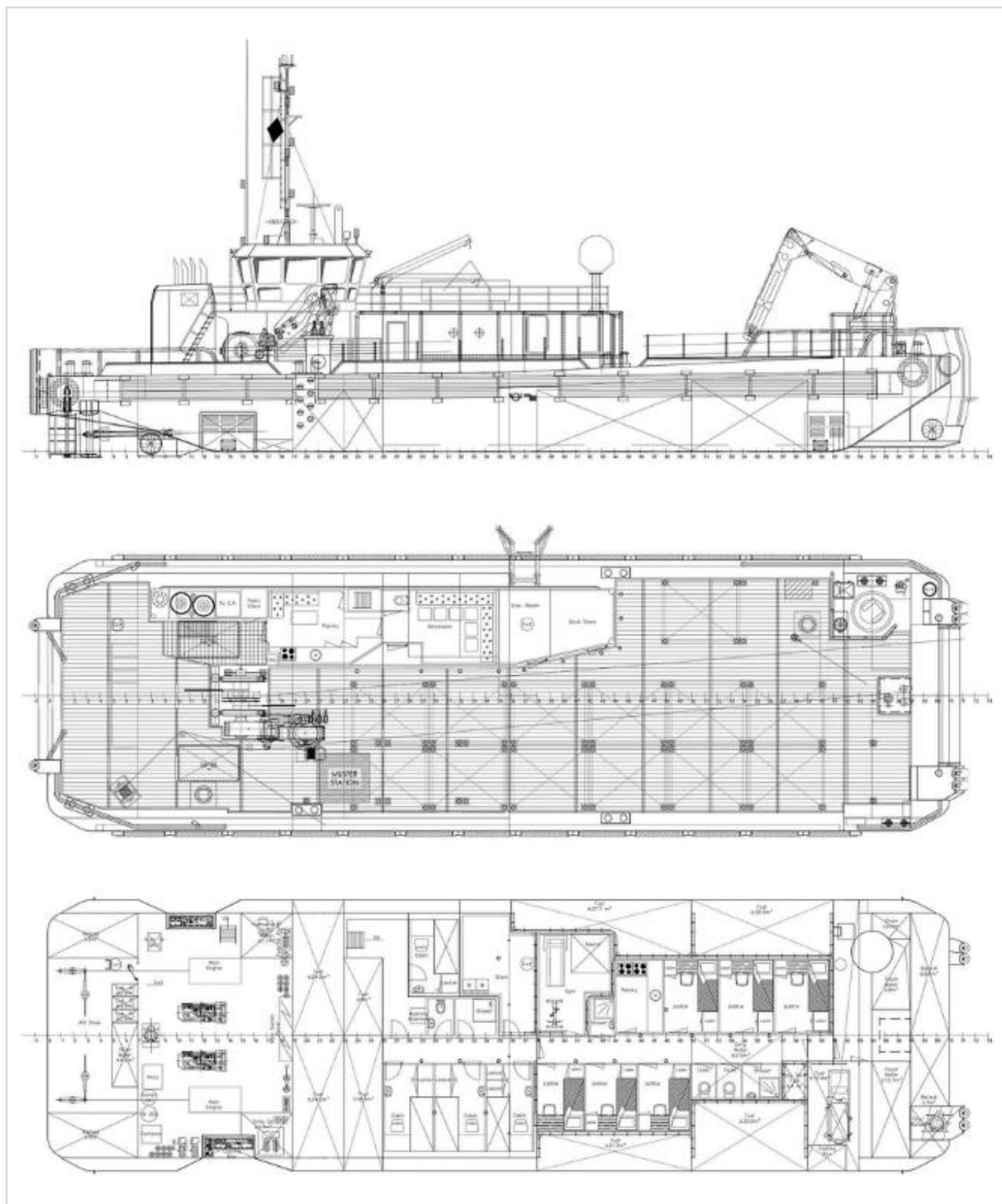
AFT hydraulic crane

JIF Breizh AFT Cranes HLRM 65 - 4S:





GENERAL ARRANGEMENT





ADDITIONAL PICTURES

