

Coastal Victory

Shoalbuster 3009

JULY 2 2024



MAIN SPECIFICATIONS

General

Type of vessel:	Shoalbuster 3009
Classification:	1✠ Hull ● Mach ● AUT-UMS
IMO:	9450258
Callsign :	PHLJ
MMSI:	244811000
Flag:	Dutch
Tonnage (UMS/GT):	309

Dimensions

Length O.A. :	30.08 m
Beam O.A.:	9.35 m
Draught aft (range):	3.00 m – 3.30 m
Max deadweight tonnage:	195 t
Deck loading:	15 t/m ²
Free deck area:	65 m ²

Tank Capacities

Fuel oil:	174 m ³
Fresh water:	40 m ³
Black/grey water:	4.30 m ³
Dirty oil:	4.30 m ³

Accommodation

POB:	7
Cabins:	3 single 2 double

Performances

Bollard pull:	46 t
---------------	------

JIFMAR GROUP

→ Contact: sales@jifmar.net



This document is for guidance and information only. Information provided is given under good faith and is non-contractual. This document may be updated without advanced notice. It may not be published, redistributed or reproduced without the prior written consent of ©Jifmar Group.



DETAILED SPECIFICATIONS

Propulsion System

AFT azimuth thrusters:	Twin fixed pitch propellers in nozzles
Bow thruster:	tunnel type 184 kW
Main engines:	2 x Caterpillar 3512B TA 1230 kW
Power output:	2460 kW
Hydraulic powerpack	Caterpillar C-18 TA 357 kW

Auxiliary Systems

Generator sets:	2 x John Deere 6068 107 kVA – 400 V/ 50 Hz
-----------------	--

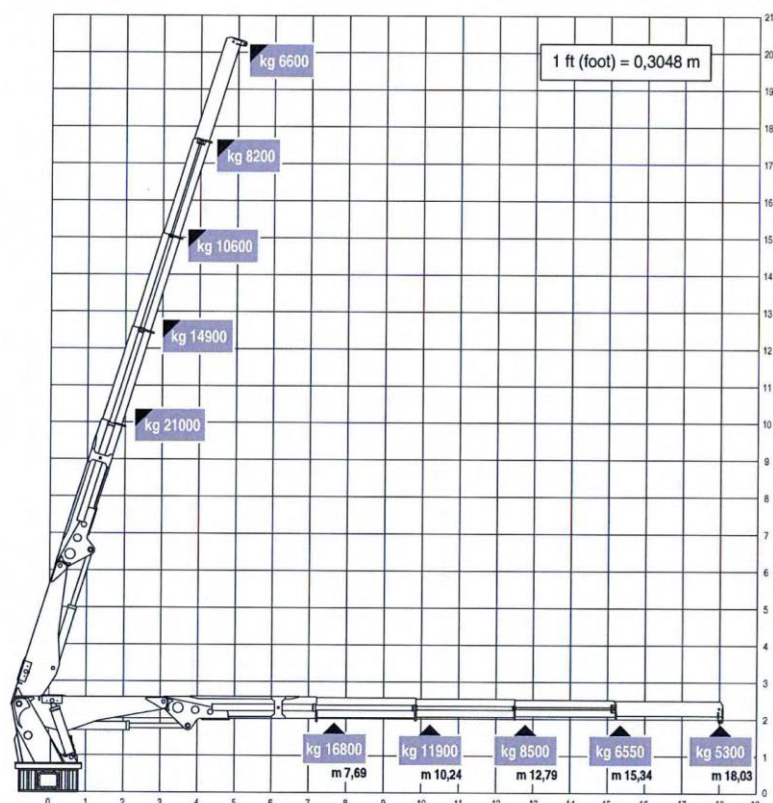
Deck Lay-out

Crane AFT:	Heila HLRM 140-4SL 140 tm Fixed hook 5.30 ton @ 18 m
Anchor handling winch:	Max. hold force 125 t 100 t - 5 m/min 40 ton – 12.5 m/min
Towing winch:	Max. holding force 75 ton 50 t - 10 m/min 20 t - 25 m/min wire cap. 800 m/44 mm
Tugger winch:	8 t - 9 m/min
Stern roller:	Yes
Chain/Wire stopper:	Shark-Jaws type 100 T
Towing pins:	2-under angle type 100 T

CRANE DIAGRAM

AFT hydraulic crane

Heila HLRM 140-4SL





GENERAL ARRANGEMENT

