

Coastal Vanguard

AH Tug

JULY 3 2024



MAIN SPECIFICATIONS

General

Type of vessel:	AH Tug
Classification:	BV, 1✕ Hull ● Mach ● AUT-UMS Unrestricted navigation
IMO:	9591569
Callsign :	PCFH
MMSI:	356286000
Flag:	Dutch
Tonnage (UMS/GT):	327

Dimensions

Length O.A.:	32.27 m
Beam O.A.:	9.35 m
Draught aft:	3 m
Max deadweight tonnage:	225 t
Clear deck area:	75 m ²
Deck loading:	15 t/m ²

Tank Capacities

Fuel oil:	198 m ³
Fresh water:	40 m ³
Black/grey water:	4.30 m ³
Dirty oil:	4.30 m ³

Accommodation

POB:	7
Cabins:	3 single 2 double

Performances

Bollard pull:	50 t
---------------	------

JIFMAR GROUP

→ Contact: sales@jifmar.net



This document is for guidance and information only. Information provided is given under good faith and is non-contractual. This document may be updated without advanced notice. It may not be published, redistributed or reproduced without the prior written consent of ©Jifmar Group.



DETAILED SPECIFICATIONS

Propulsion System

Bow thruster:	275 kw
Main engines:	2 x Caterpillar 3412 1230 kw
Power output:	2460 kW

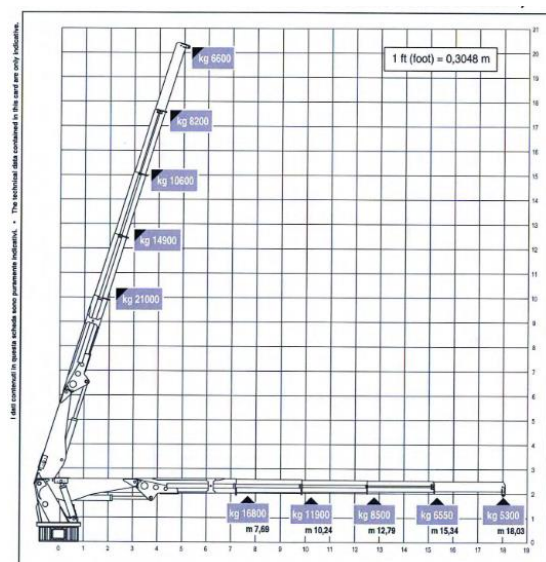
Auxiliary Systems

Generator sets:	2 x Caterpillar 4.4 TA 107 kVA – 400 V / 50 Hz
-----------------	---------------------------------------------------

CRANE DIAGRAM

FWD hydraulic crane

Heila HLRM 140-4SL 140 tm



Deck Lay-out

AH winch:	Max. hold force 125 t 100 t – 5 m / min 40t – 12.50 m /min
Towing winch:	Max. holding force 75 t 50 t – 10 m/min 20 t – 25 m/min
Tugger winch:	8 t – 9 m/min
Stern roller:	Yes
Chain/Wire stopper:	Karm Fork type 100 t
Towing pins:	3-on-row 100 t
Hydraulic deck crane:	Heila HLRM 140-4SL 140 tm Fixed hook 5.30 t@18m Wire winch SWL 5 t
Moonpool:	Situated S-side midships, 689 mm



GENERAL ARRANGEMENT

