

# Coastal Roamer

AH Tug

JULY 2 2024



## MAIN SPECIFICATIONS

### General

Type of vessel:	AH Tug
Classification:	UMS
IMO:	9688893
Callsign:	PCXX
MMSI:	244824000
Flag:	Dutch
Tonnage (UMS/GT):	140

### Dimensions

Length O.A.:	24.82 m
Beam O.A.:	8 m
Draught aft (range):	1.60 m – 2 m
Free deck area:	45.10 m <sup>2</sup>
Deck loading:	15 t/m <sup>2</sup>

### Tank Capacities

Fuel oil:	46.50 m <sup>3</sup>
Fresh water:	13.50 m <sup>3</sup>
Dirty oil:	2 m <sup>3</sup>

### Accommodation

POB:	6
Cabins:	2 single 2 double

### Performances

Bollard pull:	19.30 t
---------------	---------

JIFMAR GROUP

→ Contact: sales@jifmar.net



This document is for guidance and information only. Information provided is given under good faith and is non-contractual. This document may be updated without advanced notice. It may not be published, redistributed or reproduced without the prior written consent of ©Jifmar Group.



## DETAILED SPECIFICATIONS

### Propulsion System

Bow thruster:	92 kW
Main engines:	2 x Caterpillar C18 500 kW

### Auxiliary Systems

Generator sets:	3 x Caterpillar C4.4 TA 86 kW
-----------------	-------------------------------

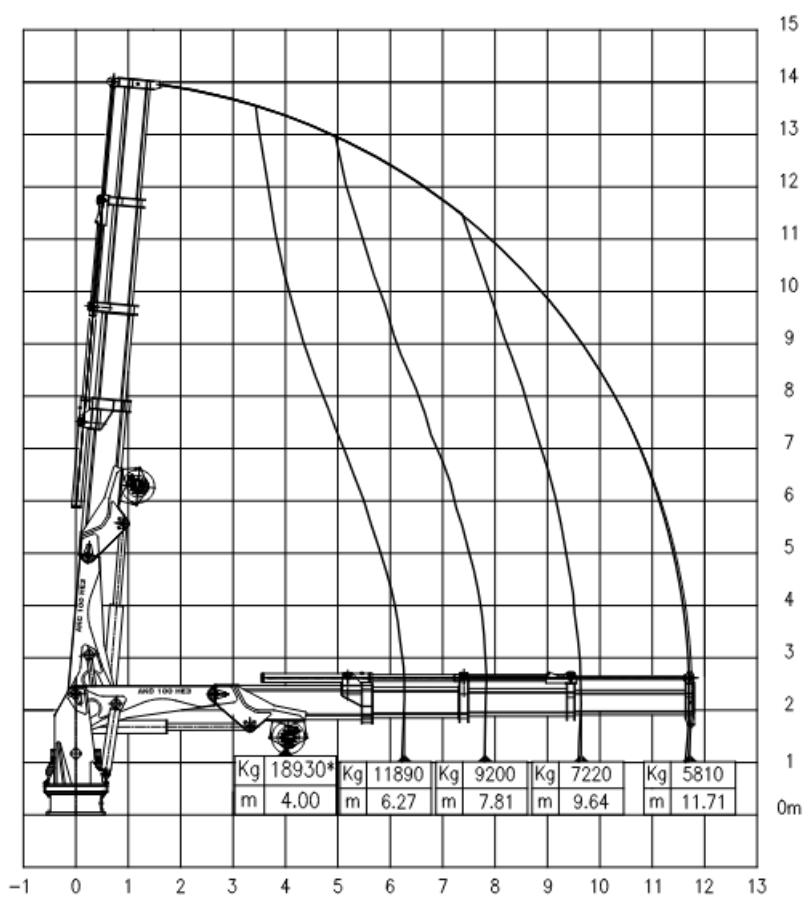
### Deck Lay-out

Crane FWD:	HS-Marine AKC 100/ HE3
Anchor handling winch:	KRAAIJEVELD Kas-10-E-TR 30 t
Towing winch:	KRAAIJEVELD Kas-10-E-TR 30 t
Towing pins:	2-on-row type TUGPINS GP2Q-WP SWL 34 T @ 90 degr.
Stern roller:	Yes
FIFI System:	CO <sub>2</sub>

## CRANE DIAGRAM

### FWD hydraulic crane

HS-Marine AKC 100/HE3





## GENERAL ARRANGEMENT

