

Coastal Ranger

Shoalbuster 2609

JULY 2 2024



MAIN SPECIFICATIONS

General

Type of vessel:	Shoalbuster 2609 - 2200 hp, 45 ton AHT winch, 140 tm crane, 29 tpb
Classification:	1✠ Hull ● Mach ● AUT-UMS
IMO:	9372664
Callsign :	PHFH
MMSI:	246515000
Flag:	Dutch
Tonnage (UMS/GT):	212

Dimensions

Length O.A.:	26.06 m
Beam O.A.:	9.10 m
Draught aft (range):	2.40 m – 2.63 m
Max deadweight tonnage:	113 t
Clear deck area:	55 m ²
Deck loading:	15 t/m ²

Tank Capacities

Fuel oil:	126 m ³
Fresh water:	30 m ³
Black/grey water:	3.80 m ³
Dirty oil:	3.80 m ³

Accommodation

POB:	7
Cabins:	3 single 2 double

Performances

Bollard pull:	29 t
---------------	------

JIFMAR GROUP

→ Contact: sales@jifmar.net



This document is for guidance and information only. Information provided is given under good faith and is non-contractual. This document may be updated without advanced notice. It may not be published, redistributed or reproduced without the prior written consent of ©Jifmar Group.



DETAILED SPECIFICATIONS

Propulsion System

AFT azimuth thrusters:	Twin fixed pitch propellers in nozzles
Bow thruster:	tunnel type 180 kW
Main engines:	2 x Caterpillar 3508B TA 821 kW
Power output:	1642 kW

Auxiliary Systems

Generator sets:	2 x John Deere 97 kVA – 400 V/ 50 Hz
-----------------	--------------------------------------

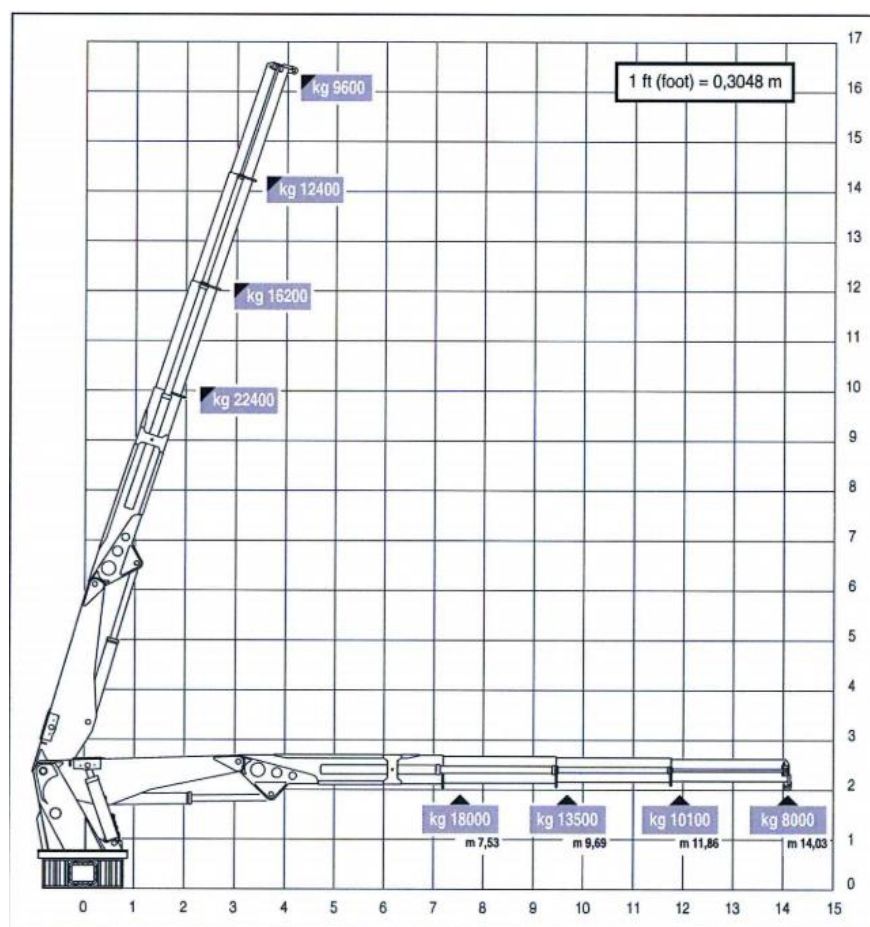
Deck Lay-out

Crane AFT:	Heila HLRM 140-3SL 140 tm Fixed hook 8 t @ 14 m
Anchor handling drum:	47 t – 4.5 m/min. 5 t – 17.5 m/min.
Towing drum:	Max. hold force 50 t 40 t - 3 m/min. 5.5 t - 17 m/min.
Tugger/Mooring winches:	8 t - 9 m/min
Towing hook:	SWL 35 ton
Stern roller:	Yes
Chain/Wire stopper:	3-on-row 100 t

CRANE DIAGRAMS

AFT hydraulic crane

Heila HLRM 140-3SL 140 tm Fixed hook 8 ton at 14 m





GENERAL ARRANGEMENT

