

Coastal Legend

OSV

JULY 3 2024



MAIN SPECIFICATIONS

General

Type of vessel:	OSV
Classification:	DNV ✕ 100 A5 RSA(20) Offshore Service Vessel E HNLS (*) MC E
IMO:	9102887
Callsign :	PCIS
MMSI:	246267000
Flag:	Dutch
Tonnage (UMS/GT):	328

Dimensions

Length O.A.:	42.75 m
Beam O.A.:	9 m
Draught aft (range):	1.35 m -1.60 m
Max deadweight tonnage:	259 t
Clear deck area:	140 m ²
Deck loading:	5 t/m ²

Tank Capacities

Fuel oil:	25 m ³
Fresh water:	30 m ³
Black/grey water:	39.50 m ³
Dirty oil:	1 m ³

Accommodation

POB:	12
Cabins:	3 single 3 double

JIFMAR GROUP

→ Contact: sales@jifmar.net



This document is for guidance and information only. Information provided is given under good faith and is non-contractual. This document may be updated without advanced notice. It may not be published, redistributed or reproduced without the prior written consent of ©Jifmar Group.



DETAILED SPECIFICATIONS

Propulsion System

Bow thruster:	Tunnel type Padmos 88 kW
Main engines:	3 x Caterpillar C18 ACERT
Power output:	1159 kW

Auxiliary Systems

Generator sets:	2 x Caterpillar C6.6 281 kVA
-----------------	------------------------------

Deck Lay-out

Crane FWD:	Effer 12000-2S
Tugger/Mooring winch:	Degra winch 150 kN
FIFI system:	Co2

Navigation & Communication

GMDSS:	A1, A2
--------	--------

CRANE DIAGRAMS

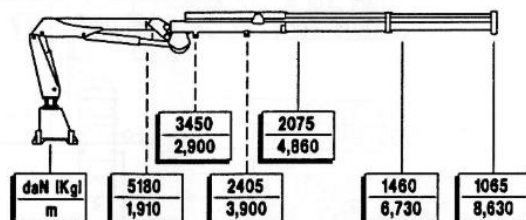
FWD hydraulic crane

Effer 12000-2S

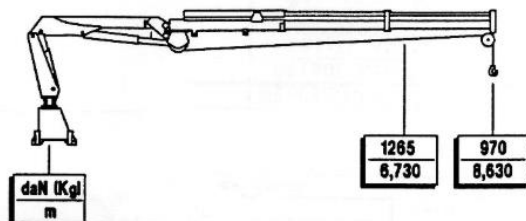
EFFER 12000-2S

LOAD DIAGRAM FOR USE AT CRANE
INCLINATION MAX 5°HEEL - 2°TRIM

WORK WITH HOOK



WORK WITH WINCH



COD.3708110



GENERAL ARRANGEMENT

