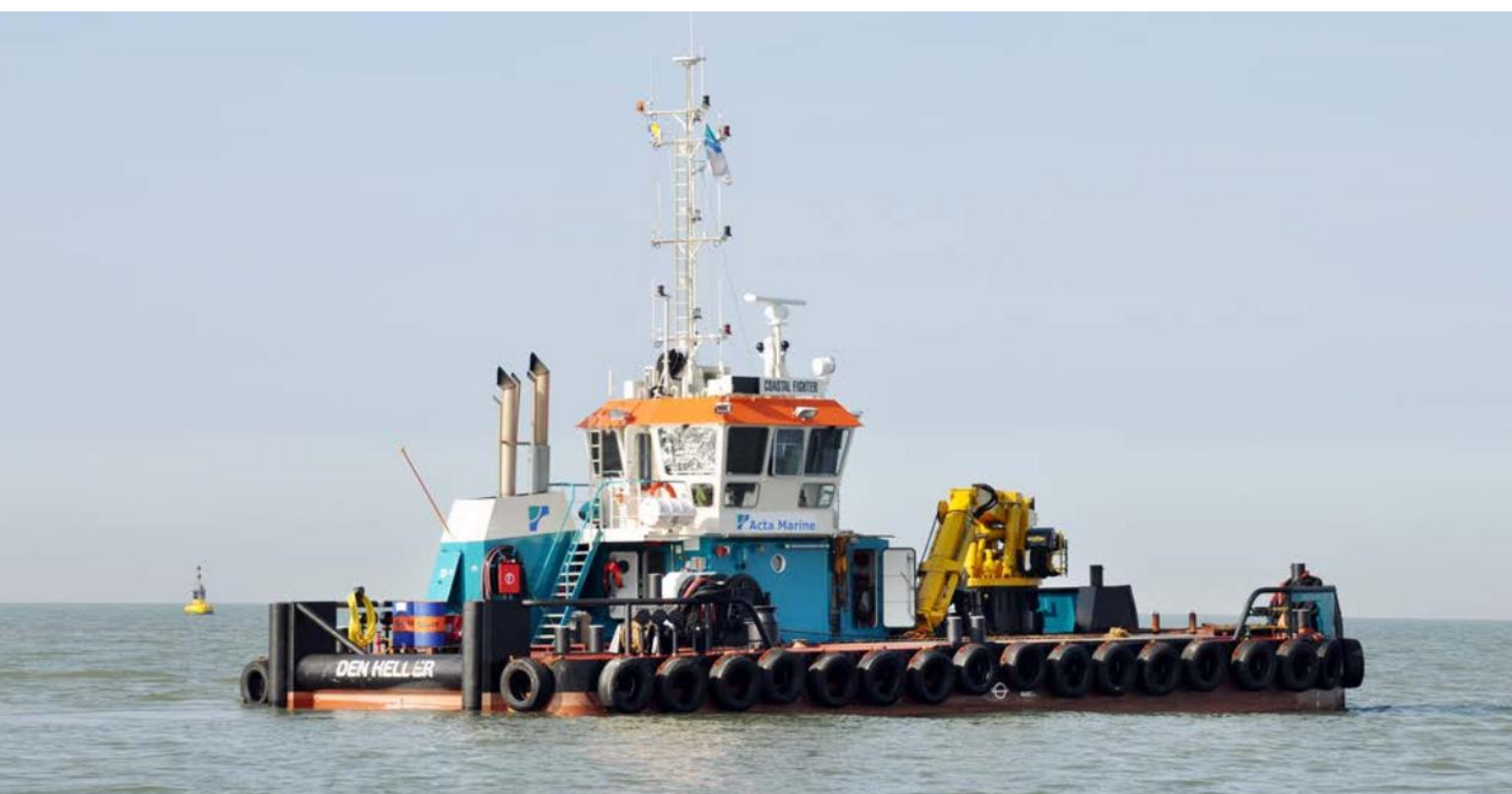


Coastal Fighter

Multi-Purpose Vessel

JULY 2 2024



MAIN SPECIFICATIONS

General

Type of vessel:	Special Service / Multi-Purpose ship
Classification:	BV 1⊗ Hull ● Mach ● AUT-UMS Coastal area
Callsign :	PJWB
MMSI:	306080000
Flag:	Dutch
Tonnage (UMS/GT):	135

Dimensions

Length O.A.:	21.60 m
Beam O.A.:	9 m
Draught aft (range):	1.52 m – 2.05 m Nozzle/rudder ext. below keel +
Deck loading:	6 t/m ²

Tank Capacities

Fuel oil:	56.10 m ³
Fresh water:	14 m ³
Black/grey water:	16 m ³
Ballast water:	32 m ³
Dirty oil:	1.63 m ³

Performances

Bollard Pull ahead:	18.60 t
Bollard Pull astern:	18.60 t

JIFMAR GROUP

→ Contact: sales@jifmar.net



This document is for guidance and information only. Information provided is given under good faith and is non-contractual. This document may be updated without advanced notice. It may not be published, redistributed or reproduced without the prior written consent of ©Jifmar Group.



DETAILED SPECIFICATIONS

Propulsion System

Main engines: 2 x Cummins QSK19-M,
559 kW each

Auxiliary Systems

Generator sets: 2 x Caterpillar C4.4,
107 kVA each

Navigation & Communication

GMDSS: 2 x Tron TR 20
Satellite Communication: Starlink

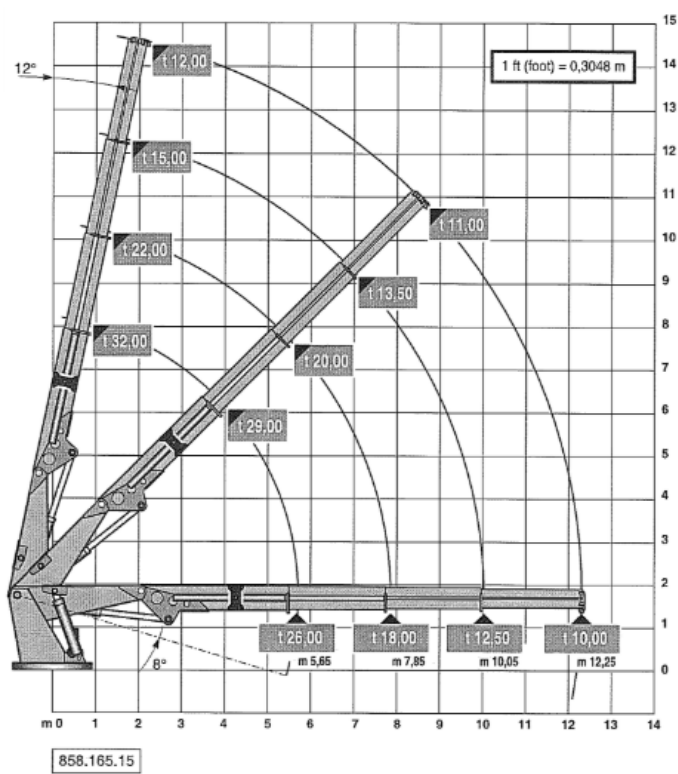
Deck Lay-out

Crane FWD:	HLRM 140-3S, 10T @ 12.25 m
Anchor handling drum:	50 t - 7 m/min. 25 t - 21 m/min.
Tugger/Mooring winches:	10 t 12 m/min.
Bow roller:	Yes
Capstan:	5 t - 30 m/min
FIFI system:	Co2

CRANE DIAGRAM

FWD hydraulic crane

HLRM 140-3S, 10T @ 12.25 mtr





GENERAL ARRANGEMENT

