

Coastal Crown

Hybrid vessel

JULY 2 2024



MAIN SPECIFICATIONS

General

Type of vessel:	Special Service / Hybrid vessel
Classification:	1✘ Hull ● Mach ✘ AUT-UMS ✘ Dynapos AM/AT-R
IMO:	99920356
Callsign:	PDVW
MMSI:	244820223
Flag:	Dutch
Tonnage (UMS/GT):	427

Performances

Bollard Pull ahead:	33.40 t
---------------------	---------

Accommodation

POB:	17 / 19
Cabins:	1 single 9 double

Tank Capacities

Fuel oil:	110 m ³
Fresh water:	44 m ³
Black/grey water:	53 m ³
Dirty oil:	3.30 m ³

Dimensions

Length O.A.:	36.85 m
Beam O.A.:	12.34 m (11.84 m without tire fenders)
Draught aft:	2.12 m
Max deadweight:	232 t
Deck Loading:	5 t/m ²

JIFMAR GROUP

→ Contact: sales@jifmar.net



This document is for guidance and information only. Information provided is given under good faith and is non-contractual. This document may be updated without advanced notice. It may not be published, redistributed or reproduced without the prior written consent of ©Jifmar Group.



DETAILED SPECIFICATIONS

Propulsion System

FWD azimuth thrusters:	2 x Veth Compact Jet CJ-100 249 kW
AFT azimuth thrusters:	Veth VZ 400
Main engines:	2 x 895 kW Cat C32

Deck Lay-out

Crane FWD:	HS Marine AKC 290 LHE3
Crane AFT:	HS Marine AKC 185 HE4
Anchor handling drum:	Technospirit Hagglund CA 100
Tugger/Mooring winch:	Technospirit 10T
Bow Roller:	Yes
Capstan:	Tecnospirit
FIFI system:	Novec 1230

Navigation & Communication

GMDSS:	Sailor SP3520
Satellite communication:	Starlink

Auxiliary Systems

Generator sets:	2 x 599 kW synch + shaft gen 72 kW synch
Harbour set:	86 kW synch

Dynamic Positioning

DP system:	Navis
DP class:	DP2

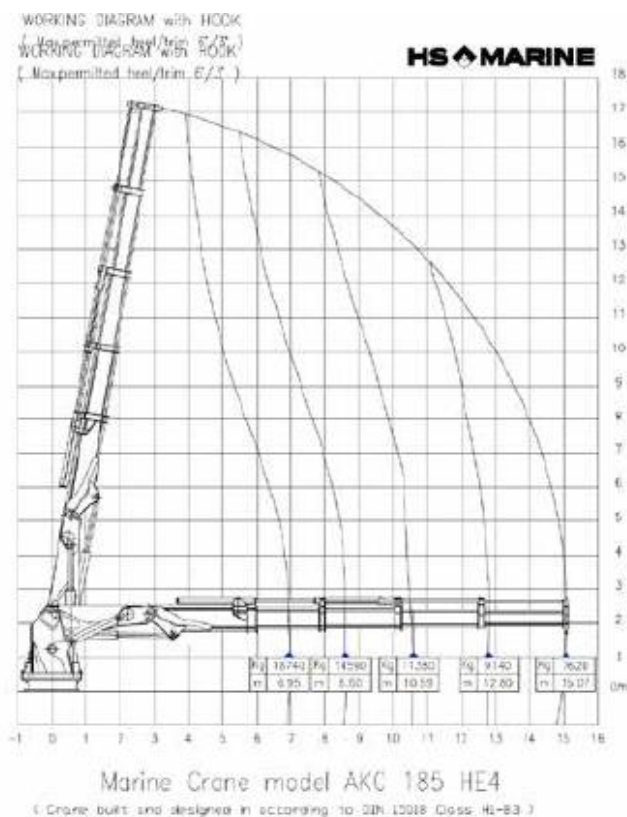
Specific Features

TIER III vessel
Only MPV vessel with a battery pack

CRANE DIAGRAMS

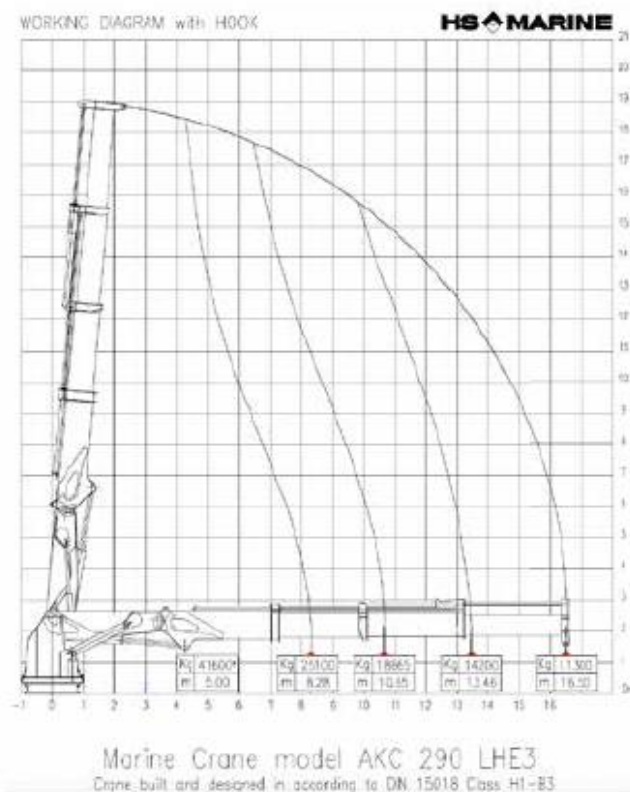
AFT hydraulic crane

HS Marine AKC 185 HE4



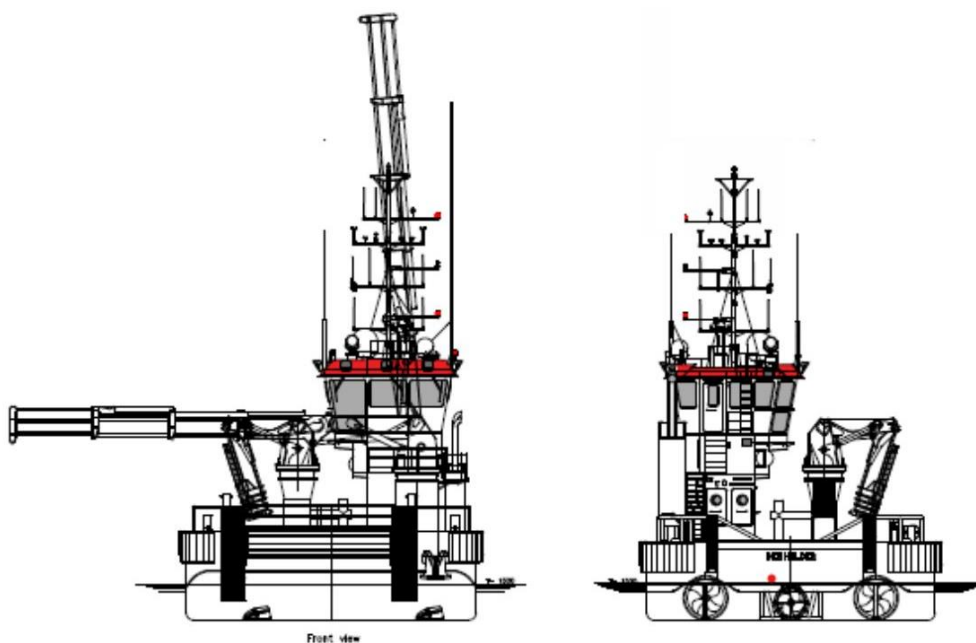
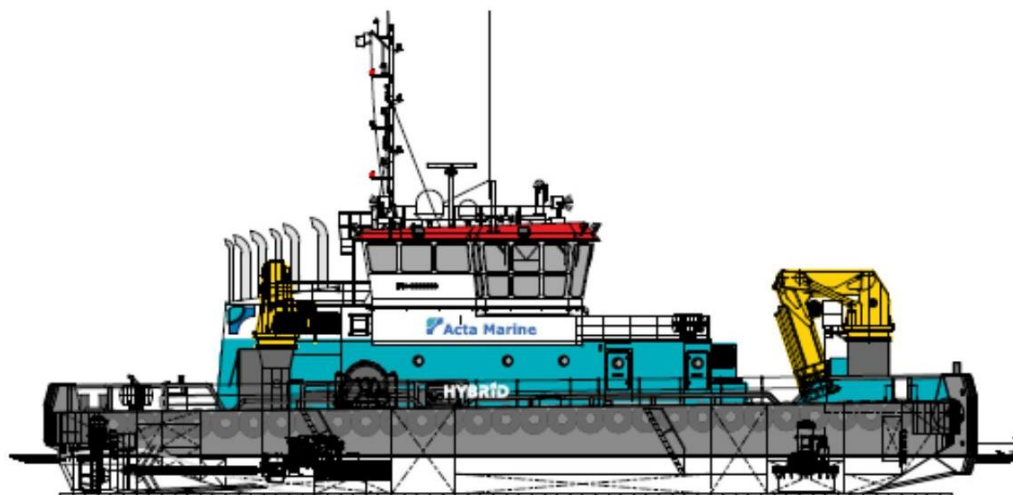
FWD hydraulic crane

HS Marine AKC 290 LHE3





GENERAL ARRANGEMENT



Front view

TANK TOP 17 / 19 Persons

