

# Coastal Boxer

Multi-Purpose Vessel

JULY 2 2024



## MAIN SPECIFICATIONS

### General

Type of vessel:	Eurocarrier 2209 -1520 hp, 50 t AHT winch, 140 tm crane, 18.5 tbp
Classification:	1✠ Hull ● Mach ● AUT-UMS Coastal area
IMO:	9600463
Callsign:	PBBY
MMSI:	245048000
Flag:	Dutch
Tonnage (UMS/GT):	135

### Performances

Bollard Pull:	18.50 t
---------------	---------

### Tank Capacities

Fuel oil:	55.04 m <sup>3</sup>
Fresh water:	31 m <sup>3</sup>
Black/grey water:	5 m <sup>3</sup>
Dirty oil:	1.60 m <sup>3</sup>

### Dimensions

Length O.A.:	21.60 m
Beam O.A.:	9.05 m
Draught aft (range):	1.52 m – 2.05 m
Max deadweight:	123 t
Clear deck area:	FWD deck approx. 67 m <sup>2</sup> AFT deck approx. 40 m <sup>2</sup>
Deck loading:	6 t/m <sup>2</sup>

JIFMAR GROUP

→ Contact: [sales@jifmar.net](mailto:sales@jifmar.net)



This document is for guidance and information only. Information provided is given under good faith and is non-contractual. This document may be updated without advanced notice. It may not be published, redistributed or reproduced without the prior written consent of ©Jifmar Group.



## DETAILED SPECIFICATIONS

### Propulsion System

AFT azimuth thrusters:	Twin fixed pitch propellers in nozzles
Main engine:	2 x Caterpillar C-4.4 107 kVA – 400 V / 50 Hz
Power output:	1118 kW

### Deck Lay-out

Crane FWD:	Heila HLRM-4S 140 tm Fixed hook SWL 8,1 t - 14 mtr.
Anchor handling drum:	50 t - 7 m/min. 25 t - 21 m/min. Holding force 65 ton
Tugger/Mooring winches:	10 t - 12 m/min.
Bow Roller:	Yes
Chain/Wire stopper:	Fork type TUGPINS SWL 125 t

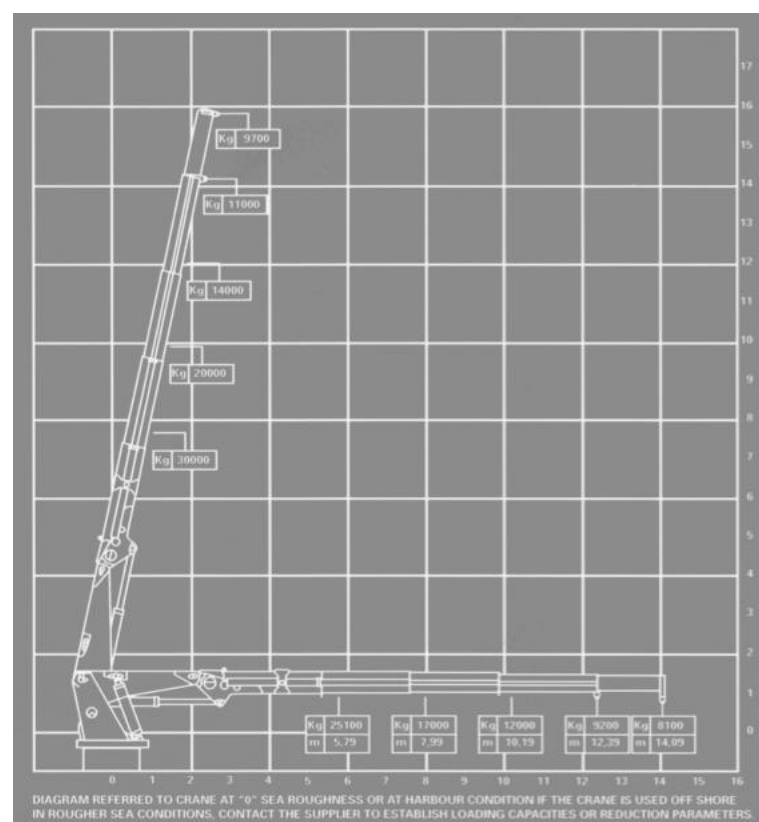
### Accommodation

POB:	5
Cabins:	1 single 2 double

## CRANE DIAGRAMS

### FWD hydraulic crane

Heila HLRM-4S 140 tm Fixed hook SWL 8,1 t - 14 m





## GENERAL ARRANGEMENT

