

Coastal Aurora

Multi-Purpose Vessel

JULY 2 2024



MAIN SPECIFICATIONS

General

Type of vessel:	Special Service / Multi-Purpose ship
Classification:	BV 1✘ Hull ● Mach ● TUG ● AUT-UMS ● Unrestricted navigation
IMO:	9569346
Callsign:	PGDD
MMSI:	244291000
Flag:	Dutch
Tonnage (UMS/GT):	296

Performances

Bollard Pull ahead:	34 t
---------------------	------

Tank Capacities

Fuel oil:	109.60 m ³
Fresh water:	31.30 m ³
Black/grey water:	10.50 m ³
Dirty oil:	1.50 m ³

Dimensions

Length O.A.:	23.99 m
Beam O.A.:	11.5 m
Draught aft:	3.90 m
Max deadweight:	222 t
Clear deck area:	150 m ²
Deck loading:	10 t/m ²

JIFMAR GROUP

→ Contact: sales@jifmar.net



This document is for guidance and information only. Information provided is given under good faith and is non-contractual. This document may be updated without advanced notice. It may not be published, redistributed or reproduced without the prior written consent of ©Jifmar Group.



DETAILED SPECIFICATIONS

Propulsion System

Bow thruster:	Kalkman Tunnel type 184 kW Hydraulic driven
Main engine:	2 x Caterpillar C32 ACERT 895 kW

Deck Lay-out

Crane FWD:	HLRM 230-4SLK
Crane AFT:	HLRM 230-4SLK
Anchor handling drum:	Kraaijeveld winch KAS 20-2-H-TR
Towing winches:	Kraaijeveld winch KAS 20-2-H-TR
Tugger/Mooring winch:	12 t 1st layer, 24 mm, 20 m/min
Towing hook:	Yes
Stern roller:	Yes
Bow Roller:	Yes
Chain/Wire stopper:	Yes
Towing pins:	Yes
FIFI system:	Co2

Accommodation

POB:	7
Cabins:	5 single

Navigation & Communication

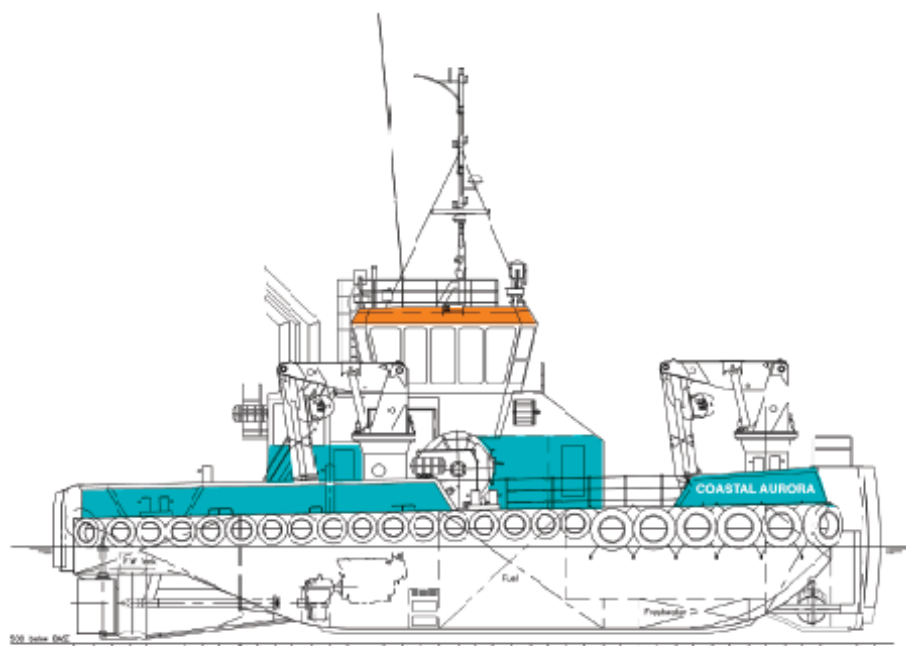
GMDSS:	2 x Sailor 6224
Satellite communication:	Intellian V80

Auxiliary Systems

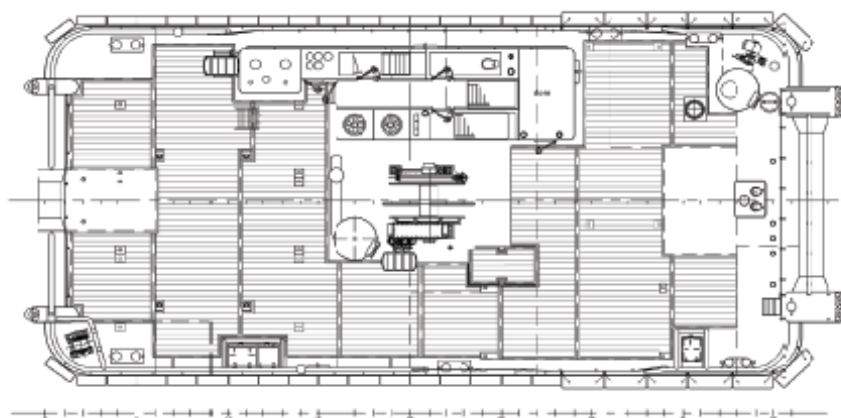
Generator sets:	2 x Caterpillar C4.4 107 kVA
-----------------	------------------------------



GENERAL ARRANGEMENT



Main deck



Below main deck

