

Coastal Ace

Multi-Purpose Vessel

JULY 2 2024



MAIN SPECIFICATIONS

General

Type of vessel:	Special Service / Multi-Purpose Vessel
Classification:	1✕ Hull ● Mach ● AUT-UMS Unrestricted navigation Multi cat 2611
Callsign:	PBBE
MMSI:	244620128
Flag:	Dutch
Tonnage (UMS/GT):	255

Dimensions

Length O.A.:	26.48 m
Beam O.A.:	11 m
Draught aft (range):	2.03 m - 2.53 m Nozzle/rudder ext. below keel + 0.64 m
Deck Loading:	6 t/m ²
Clear deck area:	135 m ²

Tank Capacities

Fuel oil:	105 m ³
Fresh water:	49 m ³
Ballast water :	44 m ³
Sewage:	5.70 m ³
Dirty oil:	1.70 m ³

Performances

Bollard pull:	35 t
---------------	------

JIFMAR GROUP

→ Contact: sales@jifmar.net



This document is for guidance and information only. Information provided is given under good faith and is non-contractual. This document may be updated without advanced notice. It may not be published, redistributed or reproduced without the prior written consent of ©Jifmar Group.



DETAILED SPECIFICATIONS

Propulsion System

Propulsion:	Twin fixed pitch propellers in nozzles
Bow thruster:	360° azimuth thruster 280 kW
Main engines:	2 x Caterpillar C-32 ACERT 970 kW
Auxiliary engines:	2 x Caterpillar C-9 250 kVA – 400 V / 50 Hz
Power output:	2240 kW
Maximum speed:	10 knots

Deck Lay-out

AHT winch:	100 t – 9 m/min 50 t – 18 m/min
AHT winch:	50 t – 7 m/min 5t – 14 m/min
Tugger winch:	15 t – 12 m/min
Hydr. Deck crane FS:	Heila HLRM-4SL 230 tm Fixed hook SWL 10.3 t – 16.50m Wire winch SWL 5 t full range
Hydr. Deck crane AS:	Heila HLRM-3S 140 tm Fixed hook SWL 10t – 12.17m
Chain/Wire stopper:	Karm Fork type
Towing pins:	2-on row
Towing hook:	SWL 45 t
A-Frame	optional

Accommodation

Accommodation:	7
Cabins:	3 single 2 double

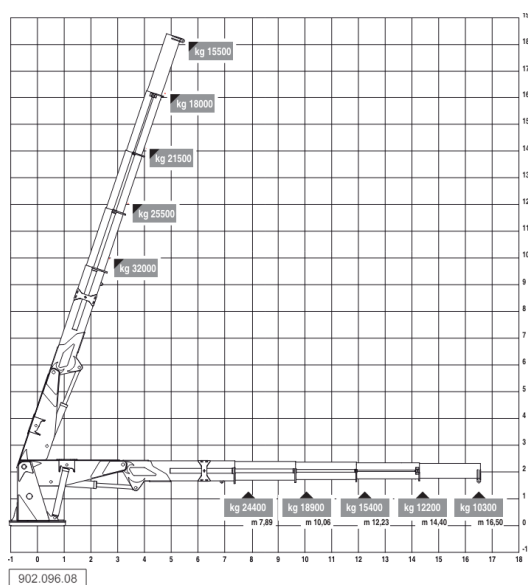
Navigation & Communication

GMDSS:	A1, A2, A3
Satellite communication:	Available

CRANE DIAGRAMS

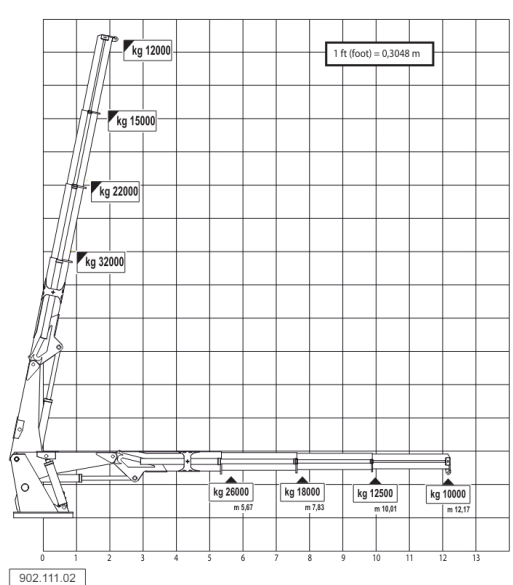
AFT hydraulic crane

Coastal Ace AFT crane Heila HLRM 230-4SL



FWD hydraulic crane

Coastal Ace FWD Heila HLRM 140-3S





GENERAL ARRANGEMENT

