

# Alexandre Z

Multi-Purpose Vessel

JULY 2 2024



## MAIN SPECIFICATIONS

### General

|                 |  |
|-----------------|--|
| Type of vessel: | Multi-Purpose Vessel<br>EuroCarrier 1808             |
| Classification: | BV 1  HULL • MACH<br>Special Service<br>Coastal area |
| Callsign:       | 5394762  |
| MMSI:           | 227021420  |
| Flag:           | French   |
| Tonnage (UMS):  | 107  |

### Performances

|               |        |
|---------------|--------|
| Bollard Pull: | 9.15 t |
|---------------|--------|

### Tank Capacities

|              |                     |
|--------------|---------------------|
| Fuel oil:    | 42 m <sup>3</sup>   |
| Fresh water: | 38.8 m <sup>3</sup> |
| Dirty oil:   | 1.50 m <sup>3</sup> |

### Dimensions

|                         |                    |
|-------------------------|--------------------|
| Length O.A.:            | 18.6 m             |
| Beam O.A.:              | 8.04 m             |
| Draught aft (range):    | 1.75 m – 2.30 m    |
| Max deadweight tonnage: | 64 t               |
| Clear Deck Area:        | 70 m <sup>2</sup>  |
| Deck loading:           | 5 t/m <sup>2</sup> |

JIFMAR GROUP

→ Contact: [sales@jifmar.net](mailto:sales@jifmar.net)



This document is for guidance and information only. Information provided is given under good faith and is non-contractual. This document may be updated without advanced notice. It may not be published, redistributed or reproduced without the prior written consent of ©Jifmar Group.



## DETAILED SPECIFICATIONS

### Propulsion System

|               |                      |
|---------------|----------------------|
| Main engine:  | 2 x CATERPILLAR 3406 |
| Power output: | 596 kW               |

### Auxiliary Systems

|                 |   |
|-----------------|---|
| Generator sets: | 2 x JOHN DEERE<br>4045TFM75<br>2 x 50 kVA |
|-----------------|---|

### Accommodation

|         |          |
|---------|----------|
| POB:    | 12       |
| Cabins: | 2 double |

### Navigation & Communication

|        |    |
|--------|----|
| GMDSS: | A1 |
|--------|----|

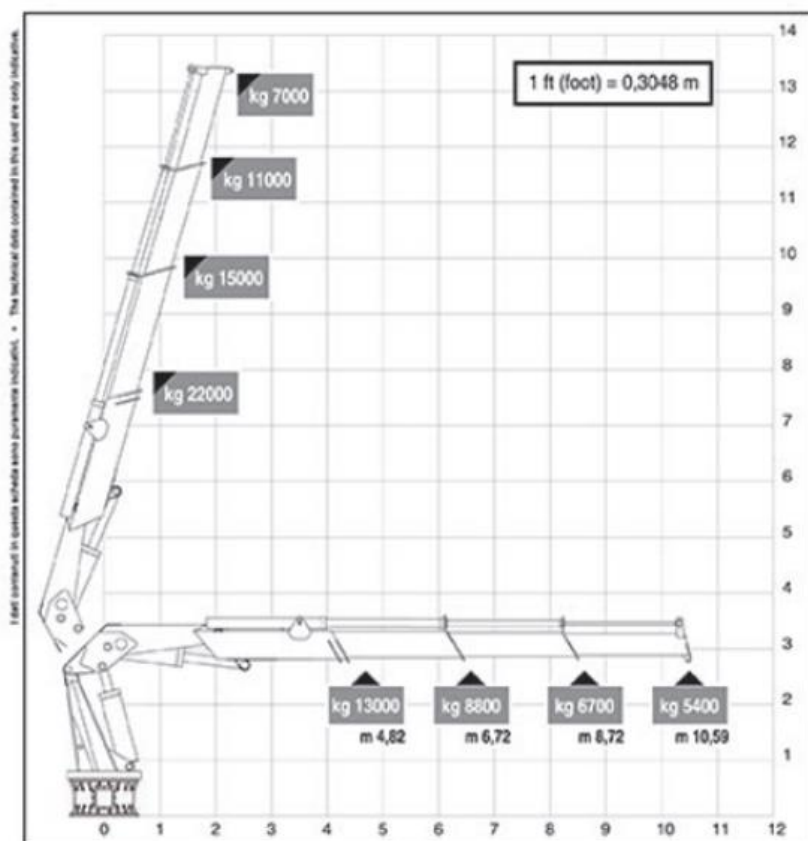
### Deck Lay-out

|                        |   |
|------------------------|---|
| Crane FWD:             | Heila HLRM 65-3S<br>5.40 t @ 10.59 m<br>5 t winch |
| Anchor handling winch: | 10 t pulling                                      |
| Tugger winches:        | 15 t pulling                                      |
| Towing hook:           | 15 t  |
| Bow roller:            | 4.90 m x 350 mm                                   |
| Towing pins:           | 2 x fwd manual pins                               |
| Capstan:               | 5 t   |

## CRANE DIAGRAMS

### FWD hydraulic crane

Alexandre Z FWD Cranes HLRM 65-3S



JIFMAR GROUP

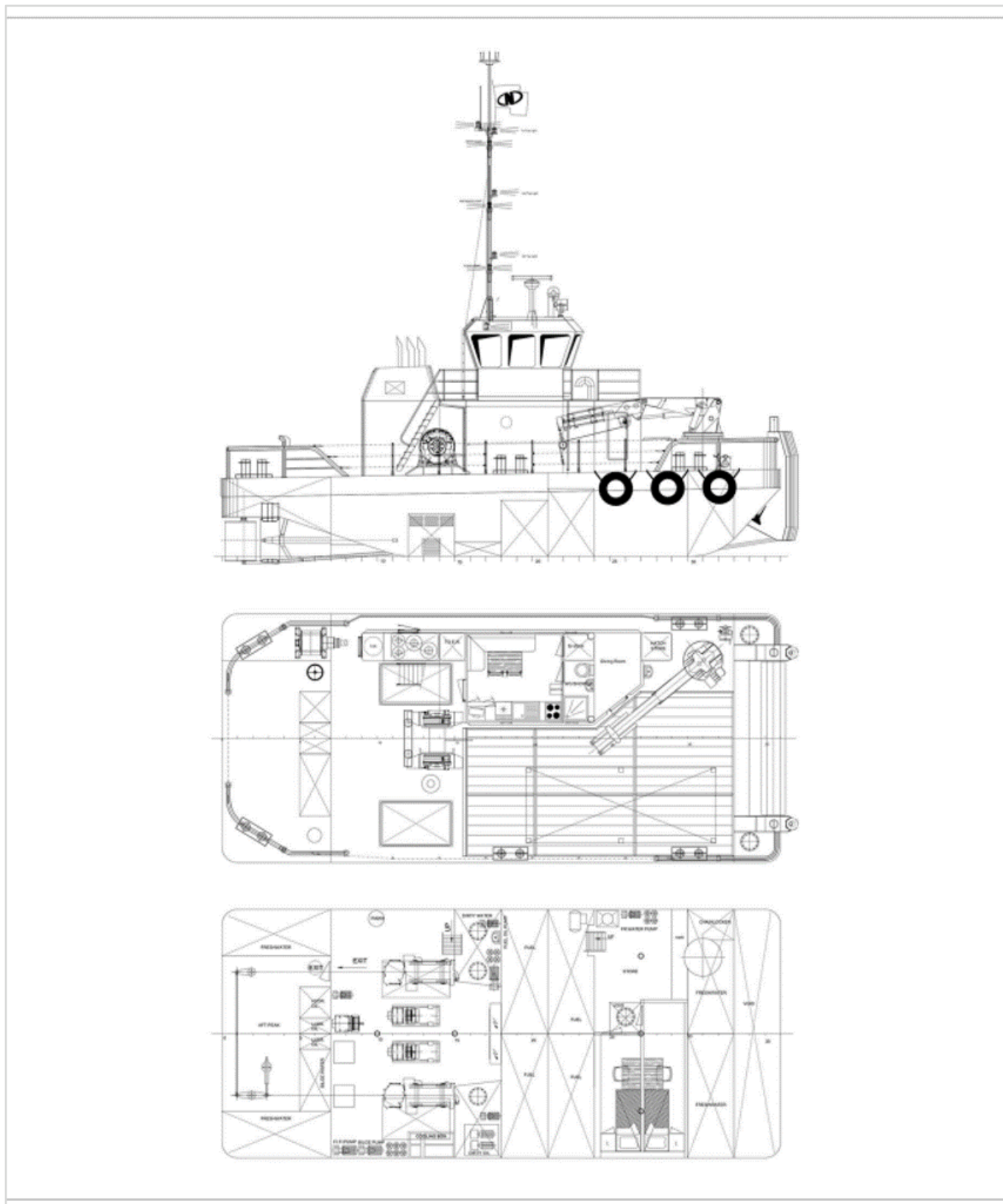
→ Contact: sales@jifmar.net



This document is for guidance and information only. Information provided is given under good faith and is non-contractual. This document may be updated without advanced notice. It may not be published, redistributed or reproduced without the prior written consent of ©Jifmar Group.



## GENERAL ARRANGEMENT





## ADDITIONAL PICTURES

